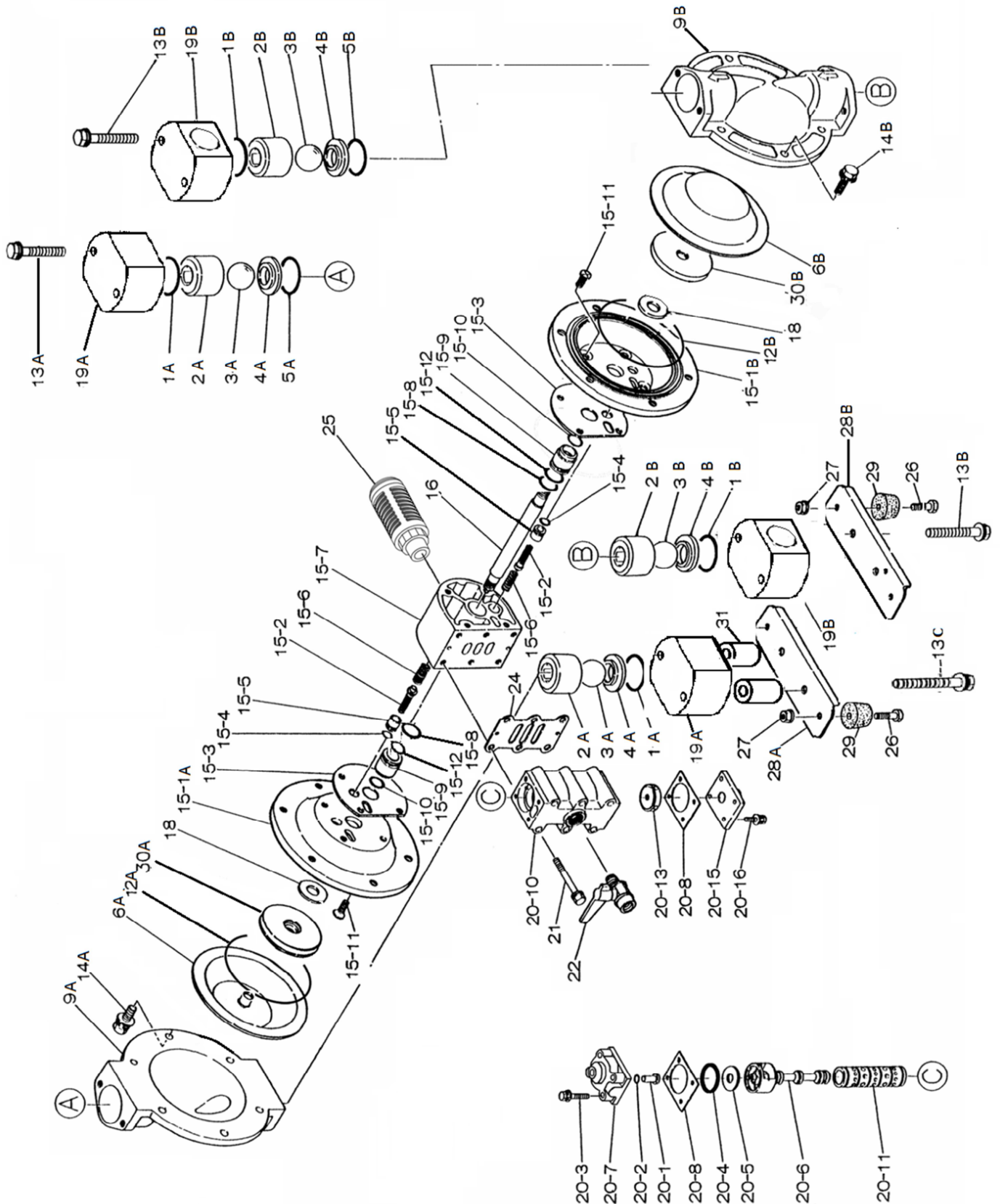


Fluid contact Portion execution Asymmetric metal pump TU



PARTS LIST

NDP-23BATU-Z

No.	SMALL SITE A	LARGE SITE B	DESCRIPTION	Q`TY
1	643036	643044	O-RING PTFE	2
2	711700	711702	BALL GUIDE ALUMINUM	2
3	770736	770691	BALL	2
4	590086	590087	VALVE SEAT SUS MOLDED	2
5	771131	771130	O-RING	1
6	021164	021166	DIAPHRAGM TU	1
9	711686	711687	PUMP CHAMBER ALU	1
12	640151	640154	O-RING NBR	1
13A	682265		BOLT ASSEMBLY DISCHARGE MANIFOLDS	2
13B		611186	BOLT MANIFOLDS IN/OUT	4
13C	1380100		BOLT INLET MANIFOLD	2
14	682724	682725	BOLT PUMP CHAMBERS	6
15+20+24	020123-N		AIR MOTOR ASSEMBLY	1
15-1	710275	710276	AIR CHAMBER	1
15-2	802360		PILOT VALVE	2
15-3	771057		GASKET	2
15-4	640009		O-RING	2
15-5	771945		VALVE SEAT	2
15-6	708666		SPRING	2
15-7	709154		BODY	1
15-8	020561		BEARING ASSEMBLY + UREA-GREASE	2
15-9				
15-10				
15-12				
15-11	682486		BOLT ASSEMBLY AIR CHAMBER	8
15-13	804409		AIR VALVE ASSEMBLY OEM	1
15-14	682265		BOLT ASSEMBLY	6
15-17	771056		GASKET	1
20	802361		VALVE ASSEMBLY	1
20-1	709161		MAINTENANCE INDICATOR / RESET BUTTON	1
20-2	640005		O-RING NBR	1
20-3	682704		BOLT	4
20-4	771241		PACKING	1
20-5	715961		WASHER	1
20-6	802400		C-SPOOL ASSEMBLY	1
20-7	710221		CAP A	1
20-8	771240		GASKET	2
20-10	711638		VALVE HOUSE	1
20-11	803931		SLEEVE ASSEMBLY	1
20-13	771914		CUSHION	1
20-15	709305		CAP-B	1
20-16	611105		BOLT + 631418 Spring washer + 130621	4

PARTS LIST

NDP-23BATU-Z

No.	SMALL SITE A	LARGE SITE B	DESCRIPTION	Q`TY
16	021167		CENTER ROD	1
18	771054PU		CUSHION	2
19	714653-BSP	714654-BSP	MANIFOLD SPLIT ALUMINUM	2
21	682265		BOLT	6
22	682772		BALL VALVE	1
24	771056		GASKET 20/25/32	1
25	804697		MUFFLER	1
26	611148		BOLT	4
27	682276		NUT	4
28	709157	709156	BASE	1
29	770551		FOOT RUBBER 15PP, 20/25/32	4
30	772562	021155	CENTER DISC	1
31	001307		SPACER	2