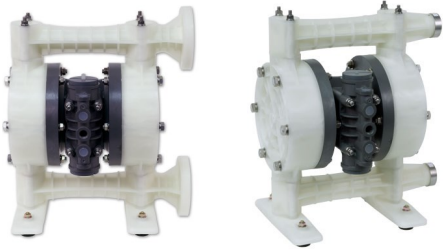


EXPLODED VIEW & PARTS LISTING

Air Operated Double Diaphragm Pump

Model: NDP-20BP[x]-PP
Polypropylene Series

Rubber fitted w/non-metallic center



To Purchase:

☎ 800-990-7867

✉ sales@yamadapump.com

📍 Find My Rep

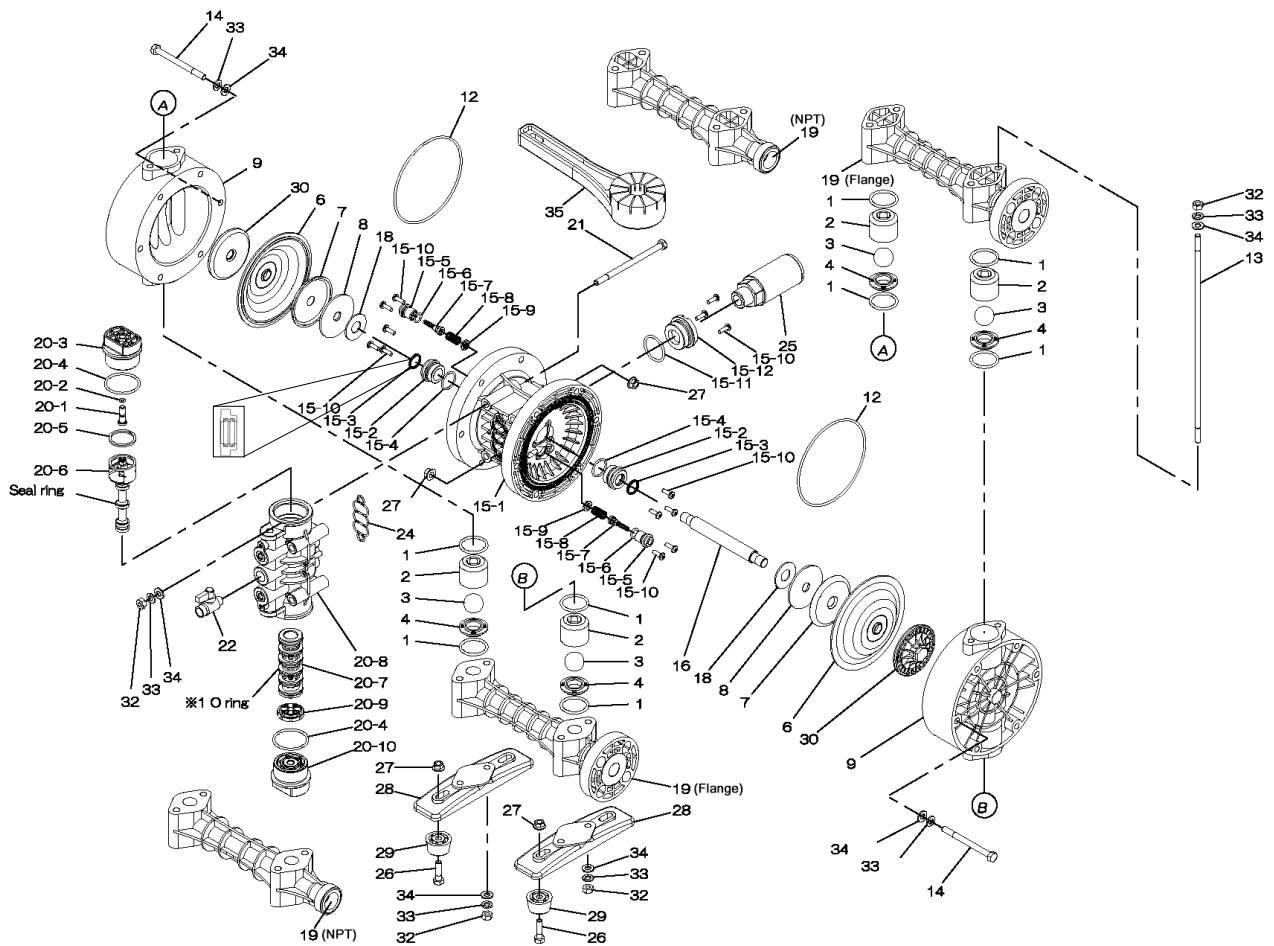
More Information:

▶ YouTube: @yamadapump

🌐 yamadapump.com

Data Sheets | CAD Drawings | Manuals
Literature | BOM | Performance Curves

Trial Program



Air Operated Double Diaphragm Pump

Rubber fitted w/non-metallic center

	NDP-20BPC-PP	NDP-20BPN-PP	NDP-20BPE-PP	NDP-20BPV-PP	NDP-20BPH-PP	NDP-20BPS-PP			
NPT	854094	854095	854096	854097	854099	854100	** NPT PUMPS **		
FLANGE	854108	854109	854110	854111	854113	854114	** FLANGE PUMPS **		
REF. No.	PARTS No.	PARTS No.	PARTS No.	PARTS No.	PARTS No.	PARTS No.	DESCRIPTION	QTY.	REORDER
1	640033	640033	684116	642033	640033	684116	O-RING	8	
2	771216	771216	771216	771216	771216	771216	BALL GUIDE 20PP	4	
3	770705	770720	770723	770726	773126	773170	BALL	4	
4	780137	780137	780137	780137	780137	780137	VALVE SEAT 20PP	4	
6	772957	772958	772959	772960	771362	771973	DIAPHRAGM	2	
7	716225	716225	716225	716225	716225	716225	CENTER DISK (AIR SIDE)	2	
8	716226	716226	716226	716226	716226	716226	WASHER	2	
9	780134	780134	780134	780134	780134	780134	OUT CHAMBER 20PP	2	
12	-	-	-	-	640151	640151	O-RING	2	
13	710122	710122	710122	710122	710122	710122	TIE ROD 20PP	4	
14	621166	621166	621166	621166	621166	621166	BOLT	12	
15	804603	804603	804603	804603	804603	804603	BODY ASSY.	1	
15-1	772928	772928	772928	772928	772928	772928	BODY 20-PP	1	
15-2	780326	780326	780326	780326	780326	780326	THROAT BEARING 20/25-PP	2	
15-3	685414	685414	685414	685414	685414	685414	V-PACKING 20/25	2	
15-4	685276	685276	685276	685276	685276	685276	O-RING	2	
15-5	772932	772932	772932	772932	772932	772932	VALVE SEAT 20PP	2	
15-6	640009	640009	640009	640009	640009	640009	O-RING	2	
15-7	802360	802360	802360	802360	802360	802360	PILOT VALVE ASSY. 20/25	2	
15-8	708666	708666	708666	708666	708666	708666	SPRING 20/25	2	
15-9	772948	772948	772948	772948	772948	772948	SPRING SEAT 20/25-PP	2	
15-10	686030	686030	686030	686030	686030	686030	TAPPING SCREW	13	
15-11	640132	640132	640132	640132	640132	640132	O-RING	1	
15-12	772933	772933	772933	772933	772933	772933	BUSHING	1	
16	710252	710252	710252	710252	710252	710252	CENTER ROD 20PP	1	
18	771054	771054	771054	771054	771054	771054	CUSHION 20/25	2	
19	780010	780010	780010	780010	780010	780010	MANIFOLD 20PP-NPT	2	
19	780208	780208	780208	780208	780208	780208	MANIFOLD 20PP-FLANGE	2	
20	804608	804608	804608	804608	804608	804608	VALVE BODY ASSY.	1	
20-1	772991	772991	772991	772991	772991	772991	RESET BUTTON 20/25-PP	1	
20-2	640002	640002	640002	640002	640002	640002	O-RING	1	
20-3	772946	772946	772946	772946	772946	772946	CAP A	1	
20-4	640043	640043	640043	640043	640043	640043	O-RING	2	
20-5	771241	771241	771241	771241	771241	771241	PACKING	1	
20-6	802400	802400	802400	802400	802400	802400	C-SPOOL ASSY.	1	
20-6 seal	771053	771053	771053	771053	771053	771053	SEAL RING	5	
20-7	804609	804609	804609	804609	804609	804609	SLEEVE ASSY.	1	
20-7-*1	686029	686029	686029	686029	686029	686029	O-RING (SLEEVE O.D.)	6	
20-8	832903	832903	832903	832903	832903	832903	VALVE BODY	1	
20-9	771914	771914	771914	771914	771914	771914	CUSHION	1	
20-10	772947	772947	772947	772947	772947	772947	CAP B	1	
21	686031	686031	686031	686031	686031	686031	BOLT	4	
22	686968	686968	686968	686968	686968	686968	BALL VALVE	1	
24	772848	772848	772848	772848	772848	772848	GASKET	1	
25	804697	804697	804697	804697	804697	804697	SILENCER	1	
26	621151	621151	621151	621151	621151	621151	BOLT	4	
27	686032	686032	686032	686032	686032	686032	NUT W/FLANGE	16	
28	771219	771219	771219	771219	771219	771219	PUMP BASE	2	
29	770551	770551	770551	770551	770551	770551	FOOT RUBBER	4	

Air Operated Double Diaphragm Pump

Rubber fitted w/non-metallic center

	NDP-20BPC-PP	NDP-20BPN-PP	NDP-20BPE-PP	NDP-20BPV-PP	NDP-20BPH-PP	NDP-20BPS-PP			
NPT	854094	854095	854096	854097	854099	854100	** NPT PUMPS **		
FLANGE	854108	854109	854110	854111	854113	854114	** FLANGE PUMPS **		
REF. No.	PARTS No.	PARTS No.	PARTS No.	PARTS No.	PARTS No.	PARTS No.	DESCRIPTION	QTY.	REORDER
30	780123	780123	780123	780123	780123	780123	CENTER DISK (LIQUID SIDE)	2	
32	683635	683635	683635	683635	683635	683635	NUT	12	
33	681300	681300	681300	681300	681300	681300	SPRING WASHER	24	
34	631329	631329	631329	631329	631329	631329	WASHER FLAT	24	
35	771244	771244	771244	771244	771244	771244	TOOL	2	
KIT	K20-PC-PP	K20-PN-PP	K20-PE-PP	K20-PV-PP	K20-PH-PP	K20-PS-PP	LIQUID SIDE		
KIT	K225-AP						AIR MOTOR		

General Tools:

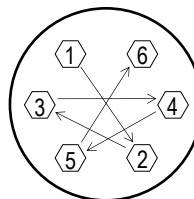
- Socket wrenches - 10mm, 12mm, 13mm, 17mm, 22mm
- Hexagonal box wrench - 5mm
- Open-end wrenches - 12mm, 13mm, 22mm
- Adjustable angle wrenches
- Phillips head screw driver

Special Tools:

- Accessory tool (771244) (included)
- Sleeve remover (713148) (sold separately)

Miscellaneous:

- Assembly Oil - turbine oil none additional class 1 (equivalent to ISO VG32 grade)
- Nuts - M14 x 1.5
- Urea grease grade (NLGI) No. 2



Tightening torque for center rod and out chambers.

- Center Rod 29 ft-lbf {40 N-m}
- Out Chambers 10 ft-lbf {13 N-m}

Tightening torque for manifold retainer nuts.

- BPC/N/E/V-PP 8 ft-lbf {10 N-m}
- BPH/S-PP 15 ft-lbf {20 N-m}

Customer Notes

Model #: _____
 Description: _____
 Serial #: _____
 Date Installed: _____
 Department Location: _____
 Tag/Project: _____