

Particularly tough and precise gauges for general use; they can be used in every field of industry for the measurement of non-aggressive and non-crystallizing fluids.

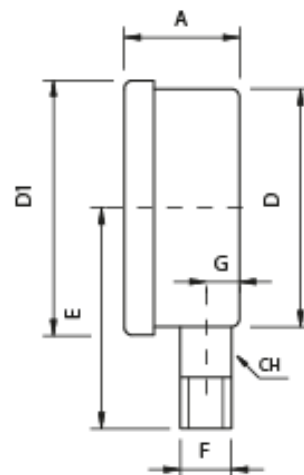
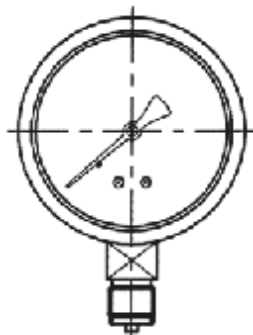


DESIGN FEATURES

- DIAL SIZE (DS): mm 63
- ACCURACY: Class 1 according to EN837-1
- PRESSURE CONNECTION: brass OT58; thread according to UNI ISO 228/1 G 1/4" A
- ELASTIC ELEMENT:
 - copper alloy with pond soldering for range ≤ 40 bar
 - AISI 316L st. with silver soldering for range > 40 bar
- MOVEMENT: brass
- WINDOW GASKET: nitrile rubber NBR
- DIAL: white aluminium; black scale and graduation according to EN837-1

TECHNICAL CHARACTERISTICS

- OPERATING PRESSURE:
 - Constant: 75% F.S.V.
 - Changeable: 60% F.S.V.
- OPERATING TEMPERATURE
 - Ambient Man1: $-30 \div 65^\circ\text{C}$
 - Process Fluid
 - Man1: $-30 \div 70^\circ\text{C}$ campo ≤ 40 bar
 - Man1: $-30 \div 120^\circ\text{C}$ campo > 40 bar
- OVERPRESSURE
 - Up to 60 bar: 25% F.S.V.
 - From 100 bar: 15% F.S.V.
- THERMAL DRIFT: max 0.3% of span every 10°C of deviation from the reference temperature of 20°C
- DEGREE OF PROTECTION: IP55 according to EN 60529
- LIQUID FILLED: Glycerol 90%
- RANGE: 0/+600 mbar code **BLMN06306 (standard)**
- RANGE: 0/+1000 mbar code **BLMN06310**



CODE	D	D1	D2	D3	D4	Ø	A1	B	CH	E	E1	F	G	G1	H	Ø Panel drilling	Weight
BLMN06306	62	68	75	85	3,5	29	-	8	14	57	57	1/4"	10	-	-	66	0,15

Dimensions = mm

info@createflow.cz
www.createflow.cz
Your Choice,
Our Commitment

Create Flow s.r.o.

tel: 00420 722 712 652

Technical data can be changed without notice.