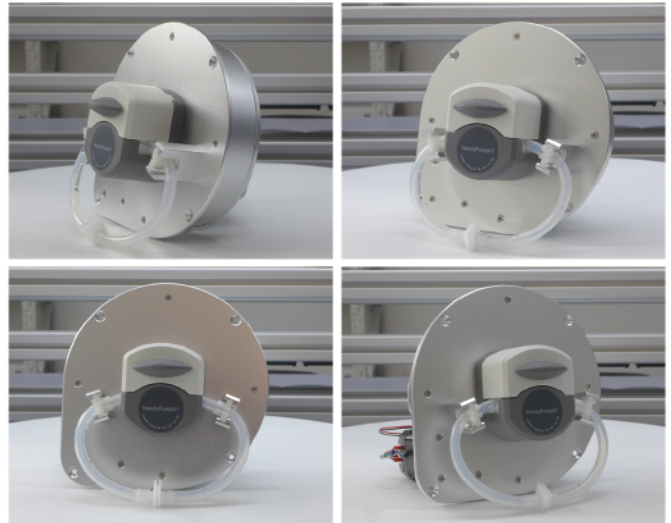
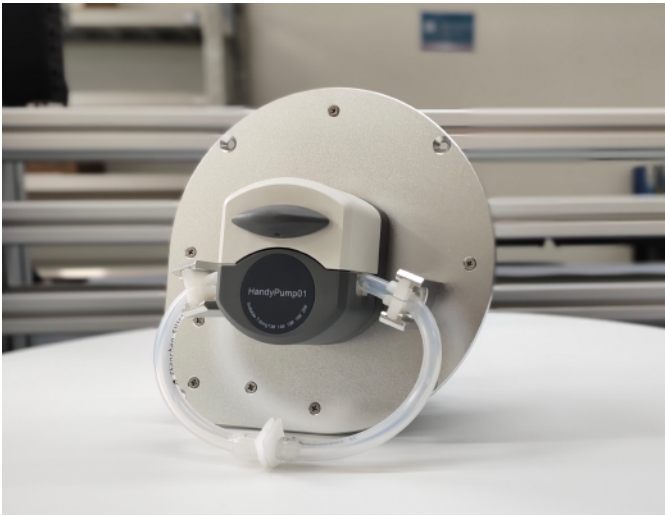


AUD-I/HandyPump



Product Introduction

AUD-I/HandyPump with compact and embedded design, can be used to automatically open and close the upper pressure block on the pump head. The device can open the upper pressure block on pump head to release the tubing when the pump stops running, extending the service life of the tubing. The tubing clamp can be fixedly installed, to adapt the upper block automatic open function. It is suitable for supporting various instruments.

Product Features

1. The upper block open automatically when the pump head stop running, extend the tubing service life.
2. The upper block close automatically before the pump start working.
3. Open and close upper block time: 5 seconds.
4. Can read open/close status, convenient to support equipment.

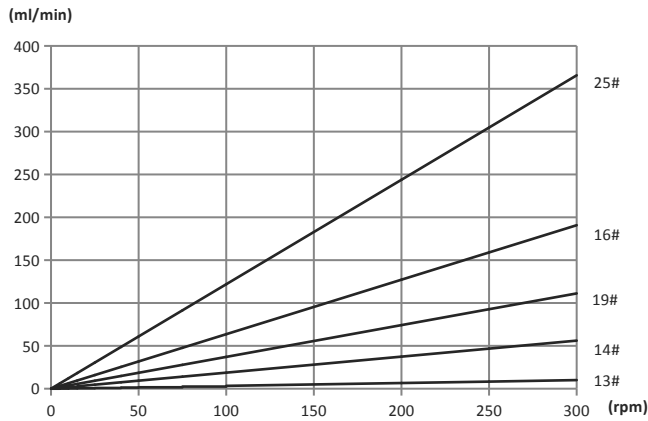
Flow Data

Pump Head	Channel number	Tubing	ID×Wall thickness(mm)	mL / r	Speed(rpm)	Flow Rate(mL/min)	Weight(kg)
HandyPump01	Single channel	13#	0.8 × 1.6	0.033	0.1~300	0.0033~10.03	0.224
		14#	1.6 × 1.6	0.187		0.0187~56.09	
		19#	2.4 × 1.6	0.371		0.0371~111.17	
		16#	3.1 × 1.6	0.636		0.0636~190.76	
		25#	4.8 × 1.6	1.219		0.1219~365.69	

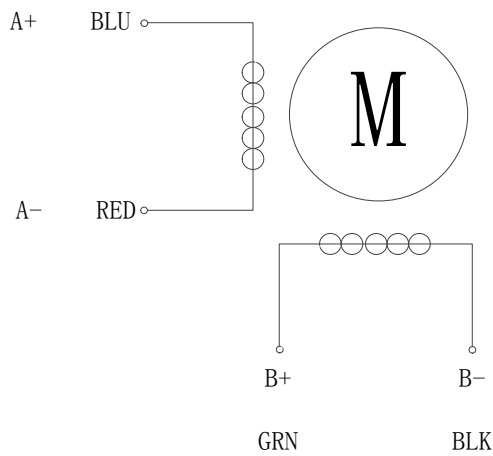
Note: Flow data measured with water and silicone tubing. This may vary considerably depending on the tube type, use period, ambient temperature, and lot tolerances, etc.



Single channel

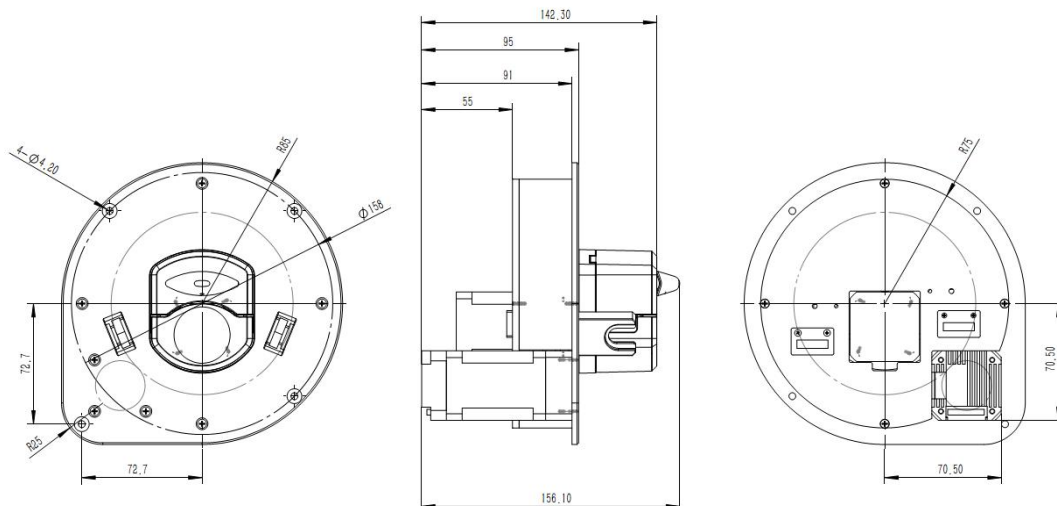


Motor Specification



Step angle	1.8°
Phase	2
Phase current	1.7A
Phase voltage	3.6V
Speed range	0.1-300rpm
Condition temperature	0-40°C
Humidity	≤80%RH
Working environment	Do not close to heating equipment, avoid dust, oil mist, corrosive gas and strong vibration.
Power supply	DC24V
Logic input voltage	DC5V

Dimension Drawing (Unit:mm)



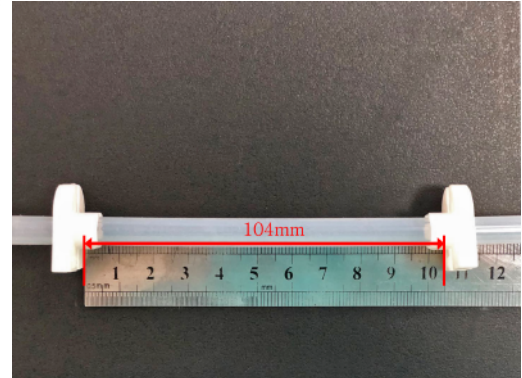
Tubing Installation Procedure



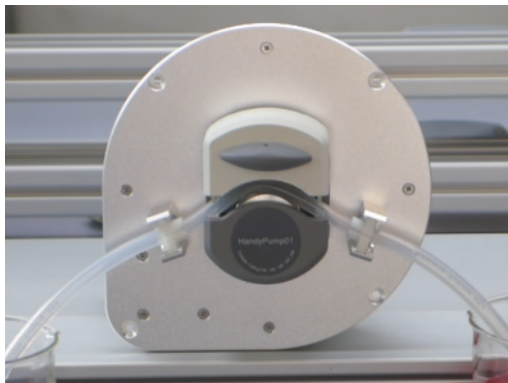
① Turn the knob anticlockwise 180°, open the upper block.



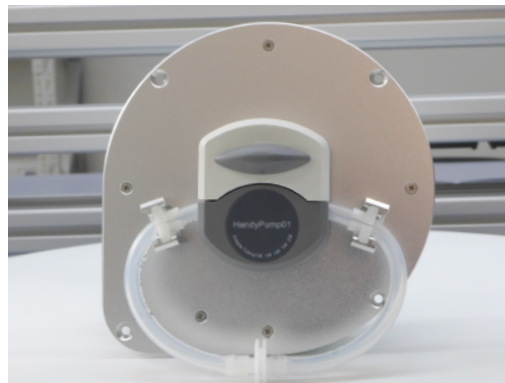
② Put the tube between rollers and upper block, tighten up the tubing lightly.



③ The two ends of the tube pass through the tube clamps respectively, leaving a length of 104mm in the middle.



④ Fix the tube clamp at one end of the tube to the left tube clamp, lightly tighten the tube, and fix the other end to the right tube clamp.



⑤ Turn the knob 180° clockwise to press the pressure block in place and compress the tube.