

# SHURflo Pumps

SHURflo offers a complete line of pumps and accessories to meet the needs of homeowners, hobbyists, green industry professionals and commercial growers alike.

From our high pressure spray pumps to our economical lawn and garden pumps, you'll find feature-packed products, with the latest innovations and same dependability, that have made SHURflo the OEMs first choice.



# 8000 Series Diaphragm Pump



## Automatic-Demand Pumps 12 VDC



- Self-priming up to 8 vertical feet [2.4m]
- Chemical-resistant materials
- Designed for heavy-duty spraying and fluid transfer applications
- Can run dry without damage
- Built-in check valve

The 8000 Series diaphragm pump is SHURflo's most widely used agriculture pump. Viton® valve material assures maximum chemical resistance. The unique conical valve design delivers high flow rates at maximum discharge pressures, making the 8000 Series the pump of choice for sprayers used on the farm or around the yard. These 12 VDC pumps deliver up to 1.8 GPM [6.8 l/min] providing maximum performance in a wide range of applications.

### Order Information

| Part #        | Description  | Max GPM | Max PSI | Port Size       | Max Draw |
|---------------|--|---------|---------|-----------------|----------|
| 8000-343-236  | All Viton® Pump: Viton® valves, Viton® diaphragm, 60 PSI demand switch   | 1.2     | 60      | 3/8" NPT-Female | 5.8      |
| 8000-541-236* | Lawn and Garden Pump: Viton® valves, Santoprene® diaphragm, 60 PSI demand switch   | 1.0     | 60      | 3/8" NPT-Female | 3.8      |
| 8000-542-136  | Low Flow Standard Pump: Viton® valves, Santoprene® diaphragm, 60 PSI demand switch   | 1.2     | 60      | 1/2" MSPT-Male  | 6.0      |
| 8000-543-136  | Standard Pump: Viton® valves, Santoprene® diaphragm, 60 PSI demand switch  | 1.8     | 60      | 1/2" MSPT-Male  | 7.3      |
| 8000-543-236* | Standard Pump: Viton® valves, Santoprene® diaphragm, 60 PSI demand switch  | 1.8     | 50      | 3/8" NPT-Female | 6.4      |
| 8000-543-238  | High Pressure Pump: Viton® valves, Santoprene® diaphragm, 100 PSI demand switch  | 1.8     | 100     | 3/8" NPT-Female | 8.7      |
| 8000-543-138  | High Pressure Pump: Viton® valves, Santoprene® diaphragm, 100 PSI demand switch  | 1.8     | 100     | 1/2" MSPT-Male  | 8.7      |
| 8000-543-936* | Standard Pump w/Wire Harness: Viton® valves, Santoprene® diaphragm, prewired with two wire molded connectors, 60 PSI demand switch | 1.8     | 50      | 3/8" NPT-Female | 6.4      |
| 8000-643-236  | Transfer Pump: Buna valves, Geolast® diaphragm, 60 PSI demand switch   | 1.8     | 60      | 3/8" NPT-Female | 6.8      |
| 8030-813-239  | High Pressure Pump: Viton® valves, Santoprene® diaphragm, 150 PSI demand switch  | 1.6     | 150     | 3/8" NPT-Female | 12.0     |

\* Packaged in quantities of 6. For single packs, replace "8000-" with "8009."

| Model        | PSI | BAR | GPM  | L/min | Amps |
|--------------|-----|-----|------|-------|------|
| 8000-343-236 | 20  | 1.4 | 0.93 | 3.5   | 3.9  |
|              | 40  | 2.8 | 0.84 | 3.2   | 4.9  |
|              | 50  | 3.4 | 0.80 | 3.0   | 5.3  |
|              | 60  | 4.1 | 0.76 | 2.9   | 5.8  |
| 8000-541-236 | 20  | 1.4 | 0.79 | 3.0   | 2.3  |
|              | 30  | 2.1 | 0.75 | 2.8   | 2.8  |
|              | 40  | 2.8 | 0.70 | 2.6   | 3.2  |
|              | 60  | 4.1 | 0.62 | 2.3   | 3.8  |
| 8000-542-136 | 20  | 1.4 | 1.11 | 4.2   | 4.1  |
|              | 40  | 2.8 | 0.98 | 3.7   | 5.1  |
|              | 50  | 3.4 | 0.93 | 3.5   | 5.6  |
|              | 60  | 4.1 | 0.90 | 3.4   | 6.0  |
| 8000-543-136 | 20  | 1.4 | 1.26 | 4.7   | 5.0  |
|              | 40  | 2.8 | 1.14 | 4.3   | 6.2  |
|              | 50  | 3.4 | 1.08 | 4.1   | 6.8  |
|              | 60  | 4.1 | 1.02 | 3.9   | 7.3  |
| 8000-543-236 | 30  | 1.4 | 1.47 | 5.5   | 5.7  |
|              | 40  | 2.8 | 1.41 | 5.3   | 5.8  |
|              | 50  | 3.4 | 1.36 | 5.1   | 6.4  |
| 8000-543-238 | 20  | 1.4 | 1.45 | 5.5   | 4.2  |
|              | 40  | 2.8 | 1.31 | 5.0   | 5.5  |
|              | 60  | 4.1 | 1.22 | 4.6   | 6.5  |
|              | 100 | 6.9 | 0.96 | 3.6   | 8.7  |
| 8000-543-138 | 20  | 1.4 | 1.45 | 5.5   | 4.2  |
|              | 40  | 2.8 | 1.31 | 5.0   | 5.5  |
|              | 60  | 4.1 | 1.22 | 4.6   | 6.5  |
|              | 100 | 6.9 | 0.96 | 3.6   | 8.7  |
| 8000-543-936 | 30  | 1.4 | 1.47 | 5.5   | 5.7  |
|              | 40  | 2.8 | 1.41 | 5.3   | 5.8  |
|              | 50  | 3.4 | 1.36 | 5.1   | 6.4  |
| 8000-643-236 | 20  | 1.4 | 1.44 | 5.4   | 4.1  |
|              | 40  | 2.8 | 1.33 | 5.0   | 5.4  |
|              | 50  | 3.4 | 1.27 | 4.8   | 6.1  |
|              | 60  | 4.1 | 1.22 | 4.6   | 6.8  |
| 8030-813-239 | 20  | 1.4 | 1.55 | 5.9   | 5.5  |
|              | 30  | 2.1 | 1.49 | 5.6   | 6.2  |
|              | 40  | 2.8 | 1.43 | 5.4   | 6.8  |
|              | 80  | 5.4 | 1.20 | 4.5   | 9.1  |
|              | 100 | 6.9 | 1.10 | 4.2   | 10.1 |
|              | 150 | 9.5 | 0.83 | 3.1   | 12.0 |

# 8000 Series Diaphragm Pump



## Bypass Pumps 12 VDC



8000-543-250  
Bypass Pump 12 VDC

8000 Series internal bypass pumps are ideal for applications where an automatic demand switch is not desired. Pumps with bypass will continue to run without damage once the bypass pressure is reached. They incorporate a triple chamber design with Viton® elastomers to withstand the toughest applications. Perfect for spot sprayers, foam markers and transfer applications where smooth, consistent flow is needed. No Control model is designed to accommodate applications that have external pressure valves plumbed into the system.

- Self-priming up to 8 vertical feet [2.4m]
- Chemical-resistant materials
- Internal bypass
- Can run dry without damage

### Order Information

| Part #        | Description  | Max GPM | Max PSI | Port Size       | Max Draw |
|---------------|--|---------|---------|-----------------|----------|
| 8000-543-250* | Standard Bypass Pump: Viton® valves, Santoprene® diaphragm, 45 PSI internal bypass               | 1.8     | 50      | 3/8" NPT-Female | 5.5      |
| 8000-543-210  | Standard Bypass Pump: Viton® valves, Santoprene® diaphragm, 35 PSI internal bypass               | 1.3     | 40      | 3/8" NPT-Female | 5.5      |
| 8000-543-220  | Standard Bypass Pump: Viton® valves, Santoprene® diaphragm, 60 PSI internal bypass               | 1.5     | 60      | 3/8" NPT-Female | 7.1      |
| 8006-543-250  | Bypass Pump with Reversed Pumphead: Viton® valves, Santoprene® diaphragm, 45 PSI internal bypass | 1.4     | 50      | 3/8" NPT-Female | 5.5      |

\* Packaged in quantities of 6. For single packs, replace "8000-" with "8009-".

| Model        | PSI | BAR | GPM  | L/min | Amps |
|--------------|-----|-----|------|-------|------|
| 8000-543-250 | 20  | 1.4 | 1.30 | 4.9   | 4.0  |
|              | 30  | 2.1 | 1.11 | 4.2   | 4.7  |
|              | 40  | 2.8 | 0.69 | 2.6   | 5.2  |
|              | 50  | 4.1 | 0.18 | 0.7   | 5.5  |
| 8000-543-210 | 10  | 0.7 | 1.28 | 4.8   | 3.8  |
|              | 20  | 1.4 | 1.19 | 4.5   | 4.4  |
|              | 30  | 2.1 | 1.07 | 4.0   | 5.0  |
|              | 40  | 2.8 | 0.05 | 0.19  | 5.5  |
| 8000-543-220 | 10  | 0.7 | 1.52 | 5.7   | 3.8  |
|              | 20  | 1.4 | 1.45 | 5.5   | 4.5  |
|              | 30  | 2.1 | 1.39 | 5.3   | 5.2  |
|              | 60  | 4.1 | 1.12 | 4.2   | 7.1  |
| 8006-543-250 | 10  | 0.7 | 1.40 | 5.3   | 3.4  |
|              | 20  | 1.4 | 1.30 | 4.9   | 4.0  |
|              | 40  | 2.8 | 0.69 | 2.6   | 5.2  |
|              | 50  | 4.1 | 0.18 | 0.7   | 5.5  |

# 8000 Series Diaphragm Pump



## No Control 12 VDC



8000-543-290

Designed to accommodate applications that have external pressure valves plumbed into the system.

- 1/4" adapter for external bypass hook-up

| Part #       | Description   | Max GPM | Max PSI | Port Size       | Max Draw |
|--------------|---|---------|---------|-----------------|----------|
| 8000-543-290 | Front Adapter Pump: Viton® valves, Santoprene® diaphragm, 1/4" FNPT adapter mounted on switch ports | 1.8     | 100     | 3/8" NPT-Female | 8.8      |

| Model        | PSI | BAR | GPM  | L/min | Amps |
|--------------|-----|-----|------|-------|------|
| 8000-543-290 | 20  | 1.4 | 1.26 | 4.7   | 5.0  |
|              | 40  | 2.8 | 1.14 | 4.3   | 6.2  |
|              | 60  | 4.1 | 1.02 | 3.9   | 7.3  |
|              | 80  | 5.5 | 0.93 | 3.5   | 8.0  |
|              | 100 | 6.9 | 0.84 | 3.2   | 8.8  |

# 5059 Series Diaphragm Pump



## 5 GPM Pump



- Delivers 5 GPM free flow - 4 GPM at 40 PSI with current draw of 13 amps
- Driven by a 12-volt, continuous-duty, sealed motor
- Self-priming capabilities, up to 8 feet

SHURflo's new field-proven 5 GPM pump delivers 3.8 GPM at 40 PSI with current draw of 13 amps. This pump is designed with a Santoprene® diaphragm for chemical resistance and maximum life, as well as Viton® valves for maximum chemical resistance. Also included is a built-in pressure switch, set at 60 PSI, which protects the pump in the event of dead-heading. The pump is available in the same footprint as other SHURflo pumps, allowing users to upgrade to a higher performance on existing installations.

### Order Information

| Part #           | Max GPM | Max PSI | Port Size  | Max Draw |
|------------------|---------|---------|------------|----------|
| 5059-1311-D011   | 5.3     | 60      | 1/2" NPSM* | 17.0     |
| 5059-1310-D011   | 5.3     | 60      | 1/2" NPTF  | 17.0     |
| 5059-1310-D012** | 5.3     | 60      | 1/2" NPTF  | 17.0     |

\* 1/2" -14 American National Standard Straight Pipe Thread

\*\* Retail box

| Model       | PSI | GPM | BAR  | L/min | Amps |
|-------------|-----|-----|------|-------|------|
| 5059 Series | 0   | 5.3 | 20   | 4.7   | 6.5  |
|             | 10  | 4.7 | 17.7 | 4.3   | 9.0  |
|             | 20  | 4.3 | 16.2 | 3.9   | 11.8 |
|             | 30  | 4.1 | 15.5 | 3.5   | 12.4 |
|             | 40  | 3.8 | 14.3 | 3.5   | 14.0 |
|             | 50  | 3.6 | 13.6 | 3.5   | 15.4 |
|             | 60  | 3.4 | 12.8 | 3.2   | 17.0 |

# 8000 and 8020 Series Diaphragm Pumps



## Bypass and Automatic-Demand 115 VAC



- Self-priming up to 8 vertical feet [2.4m]
- Built-in check valve
- Chemical-resistant materials
- Corded pump optional
- Can run dry without damage

These SHURflo 8000 and 8020 Series demand pumps provide the same reliability as the 12 VDC version, except in a 115 VAC capacity. They are ideal in agricultural applications that require high pressure with flow rates up to 1.6 GPM [6.1 l/min] and low amp draw. They can be mounted in any position, are compact, and are designed for easy maintenance.

### Order Information - Demand 115 VAC

| Part #       | Description   | Max GPM | Max PSI | Port Size       | Max Draw |
|--------------|---|---------|---------|-----------------|----------|
| 8000-533-236 | Standard Demand Pump: Viton® valves, Santoprene® diaphragm, 60 PSI demand switch                      | 1.4     | 60      | 3/8" NPT-Female | 0.64     |
| 8020-833-238 | High Pressure Pump with 6 ft. Power Cord: Viton® valves, Santoprene® diaphragm, 100 PSI demand switch | 1.6     | 100     | 3/8" NPT-Female | 0.95     |
| 8030-863-239 | High Pressure Pump: Viton® valves, Santoprene® diaphragm, 150 PSI demand switch                       | 1.5     | 150     | 3/8" NPT-Female | 1        |

### Demand 115 VAC

| Model        | PSI | BAR | GPM  | L/min | Amps |
|--------------|-----|-----|------|-------|------|
| 8000-533-236 | 20  | 1.4 | 1.15 | 4.3   | 0.46 |
|              | 40  | 2.8 | 0.97 | 3.7   | 0.55 |
|              | 50  | 3.4 | 0.91 | 3.4   | 0.60 |
|              | 60  | 4.1 | 0.85 | 3.2   | 0.64 |
| 8020-833-238 | 20  | 1.4 | 1.32 | 5.0   | 0.45 |
|              | 40  | 2.8 | 1.14 | 4.3   | 0.58 |
|              | 60  | 4.1 | 1.07 | 4.0   | 0.70 |
|              | 100 | 6.9 | 0.91 | 3.4   | 0.95 |
| 8030-863-239 | 20  | 1.4 | 1.24 | 4.7   | 0.45 |
|              | 60  | 4.1 | 1.04 | 3.9   | 0.66 |
|              | 120 | 8.3 | 0.77 | 2.9   | 0.92 |
|              | 150 | 9.7 | 0.63 | 2.4   | 1.00 |

### Order Information - Bypass 115 VAC

| Part #       | Description   | Max GPM | Max PSI | Port Size       | Max Draw |
|--------------|---|---------|---------|-----------------|----------|
| 8000-533-250 | Bypass Pump: Viton® valves, Santoprene® diaphragm, 45 PSI Internal Bypass                 | 1.4     | 50      | 3/8" NPT-Female | 0.54     |
| 8020-503-250 | Bypass Pump with Power Cord: Viton® valves, Santoprene® diaphragm, 45 PSI Internal Bypass | 1.5     | 40      | 3/8" NPT-Female | 0.56     |

### Bypass 115 VAC

| Model        | PSI | BAR | GPM  | L/min | Amps |
|--------------|-----|-----|------|-------|------|
| 8000-533-250 | 10  | 0.7 | 1.36 | 5.1   | 0.34 |
|              | 30  | 2.1 | 1.05 | 4.0   | 0.46 |
|              | 40  | 2.8 | 0.65 | 2.5   | 0.51 |
|              | 50  | 3.4 | 0.19 | 0.7   | 0.54 |
| 8020-503-250 | 10  | 0.7 | 1.40 | 5.3   | 0.37 |
|              | 20  | 1.4 | 1.30 | 4.9   | 0.44 |
|              | 30  | 2.1 | 1.10 | 4.2   | 0.50 |
|              | 40  | 2.8 | 0.80 | 3.0   | 0.56 |

# 8007 Series Diaphragm Bypass Pump



12 VDC with Electrical Package



8007-543-850  
(Front and Back Shown)

- Self-priming up to 8 vertical feet [2.4m]
- Chemical-resistant materials
- Internal bypass
- Can run dry without damage
- Built-in on/off switch included
- 2 pin connector on power leads
- Available with or without integral fuse
- Rocker switch protected from the elements by a clear boot

These models include an aesthetically-pleasing molded assembly, housing a rocker-type manual switch with international on/off switch symbols. Wiring is neatly routed into the molded assembly through form fitting entries and strain relieved inside the housing. Fused versions come with an automotive-type fuse housed under a snug fitting cap marked "fuse." Non-fused versions have a raised section.

## Order Information

| Part #       | Description  | Max GPM | Max PSI | Port Size       | Max Draw |
|--------------|--|---------|---------|-----------------|----------|
| 8007-543-850 | Bypass Pump w/Electrical Package: Viton® valves, Santoprene® diaphragm, 45 PSI bypass, Manual on/off switch 2 pin connector and fuse | 1.8     | 50      | 3/8" NPT-Female | 5.5      |
| 8007-593-850 | Bypass Pump w/Electrical Package: Viton® valves, Santoprene® diaphragm, 45 PSI bypass, Manual on/off switch 2 pin connector          | 1.8     | 50      | 3/8" NPT-Female | 5.5      |

| Model        | PSI | BAR | GPM  | L/min | Amps |
|--------------|-----|-----|------|-------|------|
| 8007-543-850 | 10  | 0.7 | 1.40 | 5.3   | 3.4  |
|              | 20  | 1.4 | 1.30 | 4.9   | 4.0  |
|              | 30  | 2.1 | 1.11 | 4.2   | 4.7  |
|              | 40  | 2.8 | 0.69 | 2.6   | 5.2  |
|              | 50  | 3.4 | 0.18 | 0.7   | 5.5  |
| 8007-593-850 | 10  | 0.7 | 1.40 | 5.3   | 3.4  |
|              | 20  | 1.4 | 1.30 | 4.9   | 4.0  |
|              | 30  | 2.1 | 1.11 | 4.2   | 4.7  |
|              | 40  | 2.8 | 0.69 | 2.6   | 5.2  |
|              | 50  | 3.4 | 0.18 | 0.7   | 5.5  |

# 8007 Series Diaphragm Pump

Automatic-Demand Pumps 12 VDC with Electrical Package



8007-593-836  
(Front and Back Shown)

- Self-priming up to 8 vertical feet [2.4m]
- Chemical-resistant materials
- Can run dry without damage
- Built-in on/off switch included
- 2 pin connector on power leads
- Available with or without integral fuse
- Rocker switch protected from the elements by a clear boot

These models include an aesthetically-pleasing molded assembly, housing a rocker-type manual switch with international on/off switch symbols. Wiring is neatly routed into the molded assembly through form fitting entries and strain relieved inside the housing. Fused versions come with an automotive-type fuse housed under a snug fitting cap marked "fuse." Non-fused versions have a raised section.

## Order Information

| Part #       | Description   | Max GPM | Max PSI | Port Size       | Max Draw |
|--------------|---|---------|---------|-----------------|----------|
| 8007-591-236 | Demand Pump w/Electrical Package: Viton® valves, Santoprene® diaphragm, 60 PSI Demand Switch, Manual on/off switch 2 pin connector (8007-543-836 includes fuse) | 1.0     | 50      | 3/8" NPT-Female | 3.7      |
| 8007-593-836 |   | 1.8     | 50      | 3/8" NPT-Female | 6.4      |
| 8007-543-836 |   | 1.8     | 50      | 3/8" NPT-Female | 6.4      |

| Model        | PSI | BAR | GPM  | L/min | Amps |
|--------------|-----|-----|------|-------|------|
| 8007-591-236 | 30  | 2.1 | 0.74 | 2.8   | 2.9  |
|              | 40  | 2.8 | 0.69 | 2.6   | 3.2  |
|              | 50  | 3.4 | 0.65 | 2.5   | 3.7  |
| 8007-593-836 | 30  | 2.1 | 1.47 | 5.5   | 5.3  |
|              | 40  | 2.8 | 1.41 | 5.3   | 5.8  |
|              | 50  | 3.4 | 1.36 | 5.1   | 6.4  |
| 8007-543-836 | 30  | 2.1 | 1.47 | 5.5   | 5.3  |
|              | 40  | 2.8 | 1.41 | 5.3   | 5.8  |
|              | 50  | 3.4 | 1.36 | 5.1   | 6.4  |

# 2087 Series Diaphragm Pump



## Automatic-Demand Pump 12 VDC with Electrical Package



2087-593-135  
(Front and Back Shown)

- Self-priming up to 12 vertical feet [3.7m]
- Chemical-resistant materials
- Can run dry without damage
- Rocker switch protected from the elements by a clear boot
- Built-in on/off switch included
- 2 pin connector on power lead

These models include an aesthetically-pleasing molded assembly, housing a rocker-type manual switch with international on/off switch symbols. Wiring is neatly routed into the molded assembly through form fitted entries and strain relieved inside the housing.

### Order Information

| Part #       | Description  | Max GPM | Max PSI | Port Size             | Max Draw |
|--------------|--|---------|---------|-----------------------|----------|
| 2087-593-135 | Standard Demand Pump:<br>Viton® valves, Santoprene® diaphragm,<br>45 PSI demand switch | 3       | 50      | 1/2"<br>MSPT*<br>Male | 8        |

\* 1/2" - 14 National American Straight Pipe Thread

| Model        | PSI | BAR | GPM  | L/min | Amps |
|--------------|-----|-----|------|-------|------|
| 2087-593-135 | 10  | 0.7 | 2.80 | 10.6  | 5.3  |
|              | 20  | 1.4 | 2.69 | 10.2  | 5.5  |
|              | 30  | 2.1 | 2.36 | 8.9   | 6.7  |
|              | 40  | 2.8 | 2.05 | 7.8   | 7.7  |
|              | 50  | 3.4 | 1.42 | 5.4   | 8.0  |

# 2088 Series Diaphragm Pump



## Automatic-Demand Pumps 12 VDC



2088-343-135

- Self-priming up to 12 vertical feet [3.7m]
- Chemical-resistant materials
- Can run dry without damage
- Automatic demand
- Built-in check valve (varies by model) prevents back flow of fluid into the solution tank
- Continuous duty motor on fin-cooled version

SHURflo 2088 Series diaphragm pumps deliver reliable performance in high flow, moderate pressure applications. They are used in a variety of spot spraying, multi-tip spraying and fertilizer drip applications that require flows of up to 3.6 GPM [13.6 l/min]. They are available in a variety of chemical-resistant materials.

### Order Information

| Part #        | Description  | Max GPM | Max PSI | Port Size             | Max Draw |
|---------------|--|---------|---------|-----------------------|----------|
| 2088-343-135† | Standard Pump:<br>Viton® valves, Santoprene®<br>diaphragm, 45 PSI demand switch      | 3       | 40      | 1/2"<br>MSPT*<br>Male | 7.7      |
| 2088-443-144  | Standard Pump:<br>Santoprene® valves, Santoprene®<br>diaphragm, 45 PSI demand switch | 3.5     | 45      | 1/2"<br>MSPT*<br>Male | 9.1      |

\* 1/2" - 14 National American Straight Pipe Thread

† Packaged in quantities of 6. For single pack, replace "135" with "435."

| Model        | PSI | BAR | GPM  | L/min | Amps |
|--------------|-----|-----|------|-------|------|
| 2088-343-135 | 10  | 0.7 | 2.80 | 10.6  | 5.3  |
|              | 20  | 1.4 | 2.69 | 10.2  | 5.5  |
|              | 30  | 2.1 | 2.36 | 8.9   | 6.7  |
|              | 40  | 2.8 | 2.05 | 7.8   | 7.7  |
| 2088-443-144 | 10  | 0.7 | 2.83 | 10.7  | 5.8  |
|              | 20  | 1.4 | 2.56 | 9.7   | 7.0  |
|              | 30  | 2.1 | 2.31 | 8.7   | 8.0  |
|              | 40  | 2.8 | 2.02 | 7.6   | 9.1  |

# 2088 Series Diaphragm Pumps



## No Control 12 VDC



2088-343-500

- Self-priming up to 12 vertical feet [3.7m]
- Chemical-resistant materials
- Can run dry without damage
- Built-in check valve (may vary by models) prevents back flow of fluid through the pump

SHURflo 2088 Series diaphragm pumps deliver reliable performance in high flow, moderate pressure applications. They are used in a variety of spraying and transferring applications that require flows of up to 3.3 GPM [12.5 l/min]. They are available in a variety of chemical-resistant materials. They can be mounted in any position and are designed for easy maintenance.

### Order Information

| Part #       | Description  | Max GPM | Max PSI | Port Size       | Max Draw |
|--------------|--|---------|---------|-----------------|----------|
| 2088-343-170 | Front Adapter Pump with Electrical Package: Viton® valves, Santoprene® diaphragm, 1/4" FPT adapter mounted on switch port, built-in on/off power switch, fuse holder pre-wired w/2-wire molded connector, no demand switch | 3.3     | 50      | 1/2" MSPT* Male | 9.1      |
| 2088-343-500 | Front Adapter Pump: Viton® valves, Santoprene® diaphragm, 1/4" FPT adapter mounted on switch port, no demand switch  | 3.3     | 50      | 1/2" MSPT* Male | 10.1     |

\* 1/2" - 14 National American Straight Pipe Thread

| Model        | PSI | BAR | GPM  | L/min | Amps |
|--------------|-----|-----|------|-------|------|
| 2088-343-170 | 10  | 0.7 | 3.00 | 11.3  | 5.0  |
|              | 30  | 2.1 | 2.38 | 9.0   | 7.5  |
|              | 40  | 2.8 | 2.14 | 8.1   | 8.3  |
|              | 50  | 3.4 | 1.86 | 7.0   | 9.1  |
| 2088-343-500 | 10  | 0.7 | 2.79 | 10.6  | 5.8  |
|              | 30  | 2.1 | 2.26 | 8.6   | 8.3  |
|              | 40  | 2.8 | 1.99 | 7.5   | 9.3  |
|              | 50  | 3.4 | 1.69 | 6.4   | 10.1 |

# 2088 Series Diaphragm Pumps



## Automatic-Demand 115 VAC



2088-394-144

- Self-priming up to 12 vertical feet [3.7m]
- Chemical-resistant materials
- Can run dry without damage
- Automatic demand
- Built-in check valve (may vary by model) prevents back flow of fluid into the solution tank

These SHURflo 2088 Series pumps offer the same reliability as the 12 VDC version except in 115 VAC capacity. They are used in a variety of spot spraying, mini-bulk transfer and fertilizer applications that require flows of up to 3.2 GPM [12.1 l/min]. They are available in a variety of chemical-resistant materials.

### Order Information

| Part #       | Description  | Max GPM | Max PSI | Port Size       | Max Draw |
|--------------|--|---------|---------|-----------------|----------|
| 2088-394-144 | Standard Pump with 6' power cord: Viton® valves, Santoprene® diaphragm, 45 PSI demand switch | 3       | 40      | 1/2" MSPT* Male | 0.7      |
| 2088-394-154 | Standard Pump: Viton® valves, Santoprene® diaphragm, 45 PSI demand switch                    | 3.2     | 40      | 1/2" MSPT* Male | 0.98     |

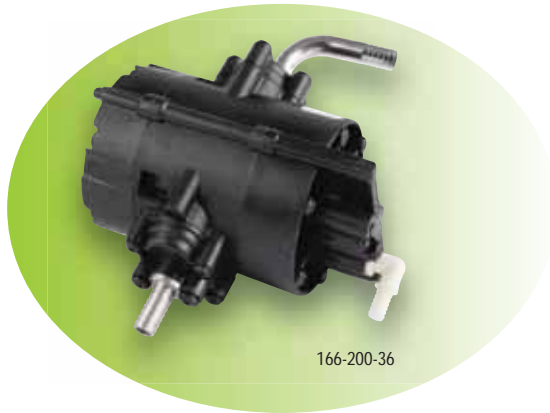
\* 1/2" - 14 National American Straight Pipe Thread

| Model        | PSI | BAR | GPM  | L/min | Amps |
|--------------|-----|-----|------|-------|------|
| 2088-394-144 | 10  | 0.7 | 2.40 | 9.1   | .55  |
|              | 20  | 1.4 | 2.20 | 8.3   | .60  |
|              | 30  | 2.1 | 1.90 | 7.2   | .65  |
|              | 40  | 2.8 | 1.60 | 6.0   | .70  |
| 2088-394-154 | 10  | 0.7 | 2.71 | 10.2  | .65  |
|              | 20  | 1.4 | 2.41 | 9.1   | .77  |
|              | 30  | 2.1 | 2.10 | 8.0   | .89  |
|              | 40  | 2.8 | 1.84 | 7.0   | .98  |

# 166 Series Diaphragm Pumps



Air-Driven



166-200-36

- 2 chamber dual diaphragm
- Positive displacement
- On-demand operation
- Chemical-resistant polypropylene body
- 30 to 60 PSI [2.1-4.1 bar]

The SHURflo 166 air-operated demand pumps employ a dual diaphragm design, with a patented fast action switching mechanism allowing for consistent flow and pressure. They are built for the toughest pumping applications and are available in a variety of elastomers that allow them to be compatible with most caustic or acidic fluids. Ideal for chemical transfer, liquid fertilizer injection and agricultural spraying.

## Order Information

| Part #     | Description                      | Max GPM | Max PSI |
|------------|----------------------------------|---------|---------|
| 166-200-36 | Viton® valves and diaphragm      | 0.6     | 30-60   |
| 166-200-46 | Buna valves and diaphragm        | 0.6     | 30-60   |
| 166-200-56 | EPDM valves and diaphragm        | 0.6     | 30-60   |
| 166-200-57 | Santoprene® valves and diaphragm | 0.6     | 30-60   |

# Power Twin Pump



Demand Pumps 12 VDC



4211-035

- Up to 6.25 GPM [23.7 Li/min]
- Thermally-protected motor with heat sink
- Self-priming
- Quiet, balanced operation
- Long-life pressure switch
- Intake/Discharge manifold optional

Take all the performance and features of the time-tested 2088 series, double it, and the result is the high-flow Power Twin. Delivers an open flow of 6.25 GPM [23.7 l/min] at a mere 8.7 amps. At 40 PSI [2.8 bar], it delivers 3.5 GPM [13.2 l/min] and draws only 17.2 amps. One of the most efficient high-flow self-priming pumps available today, the Power Twin is excellent for transferring, light-duty spraying, and use as a 1:1 proportioning pump.

## Order Information

| Part #    | Description   | Max GPM | Max PSI | Port Size | Max Draw |
|-----------|---|---------|---------|-----------|----------|
| 4111-035  | Viton® valves, Santoprene® diaphragm, 45 PSI demand switch, manifold with 3/8" barb ports | 6.25    | 40      | 1/2" MPT  | 17.2     |
| 4211-035  | Viton® valves, Santoprene® diaphragm, 45 PSI demand switch                                | 6.25    | 40      | 1/2" MPT  | 17.2     |
| 94-389-00 | Manifold Kit 3/8" barb (2) per pump   |         |         |           |          |
| 94-389-01 | Manifold Kit 1/4" barb (2) per pump   |         |         |           |          |

| Model    | PSI | BAR | GPM  | L/min | Amps |
|----------|-----|-----|------|-------|------|
| 4111-035 | 0   | 0   | 6.25 | 23.5  | 8.7  |
|          | 10  | 0.7 | 5.7  | 21.6  | 12.2 |
|          | 20  | 1.4 | 5.0  | 19.0  | 14.5 |
|          | 30  | 2.1 | 4.3  | 16.2  | 16.1 |
|          | 40  | 2.8 | 3.5  | 13.2  | 17.2 |
| 4211-035 | 0   | 0   | 6.25 | 23.5  | 8.7  |
|          | 10  | 0.7 | 5.7  | 21.6  | 12.2 |
|          | 20  | 1.4 | 5.0  | 19.0  | 14.5 |
|          | 30  | 2.1 | 4.3  | 16.2  | 16.1 |
|          | 40  | 2.8 | 3.5  | 13.2  | 17.2 |



# 9300 Series Submersible Pump



24 VDC



- Fits wells 4 inches [10.2 cm] in diameter and larger
- Accepts a variety of jacketed cables from your power source
- Runs dry without damage
- Corrosion-proof housing with stainless steel fasteners
- Long-life, 24 VDC operation
- Quick disconnect for easy installation and service

The SHURflo 9300 series pump offers a solution to your remote water needs. It's rugged, durable and built to last. This pump delivers a steady 1.0 GPM [3.8 l/min] operating at 100 PSI [6.9 bar] maximum at 230 feet [70.1m]. It incorporates a unique, waterblocked cable connector that is impervious to water leakage and condensation problems preventing waterwicking. Great for applications in livestock watering, irrigation, ponds, islands, remote homes and cabins.

## Order Information

| Part #       | Description                        | Max GPM | Max Draw |
|--------------|------------------------------------|---------|----------|
| 9325-043-101 | EPDM valves, Santoprene® diaphragm | 1.8     | 4.1      |
| 902-100      | 9300 DC Pump Controller            |         |          |
| 902-200      | 9300 DC Pump Controller            |         |          |

| Model        | Vertical Lift |        |     |     | Solar Array | Current |
|--------------|---------------|--------|-----|-----|-------------|---------|
|              | Feet          | Meters | GPH | LPH | Watts       | Amps    |
| 9325-043-101 | 20            | 6.1    | 117 | 443 | 58          | 1.5     |
|              | 60            | 18.3   | 109 | 413 | 78          | 2.1     |
|              | 100           | 30.5   | 103 | 390 | 99          | 2.6     |
|              | 140           | 42.7   | 99  | 375 | 115         | 3.1     |
|              | 180           | 54.9   | 93  | 352 | 135         | 3.6     |
|              | 230           | 70.1   | 82  | 310 | 155         | 4.1     |

# 3000 Series Flexible Impeller Pumps



12 VDC



- Self-priming to 7.5 feet [2.3m] vertical
- Maximum head of 28 feet [8.5m] (12 PSI [.83 bar])
- Liquid temps from 40° F to 185° F [4.4°C to 85°C]
- Thermal overload protection
- Stainless steel shaft
- BUNA-N impeller and lip seal
- Built-in reverse switch and 8 foot [2.4m] cable with battery clips

The 3000 Series is suitable for a variety of uses from pumping water to changing oil in cars, trucks and farm equipment. Pumps incorporate thermal overload protection.

Not intended for use with flammable liquids or in flammable environments.

## Order Information

| Part #   | Max GPM | Max PSI | Max Draw |
|----------|---------|---------|----------|
| 3000-350 | 2.5     | 10      | 7.4      |

| Model    | PSI | BAR | Dischg. Ft of Head | GPM | L/min | Amps |
|----------|-----|-----|--------------------|-----|-------|------|
| 3000-350 | 0   | 0.0 | 0.0                | 3.8 | 14.4  | 6.5  |
|          | 5   | 0.3 | 11.5               | 3.4 | 12.9  | 7.1  |
|          | 10  | 0.7 | 23.0               | 2.5 | 9.5   | 7.4  |

# SLV Series Diaphragm Pump



## Demand Pumps



- Automatic demand; 25 PSI [1.72 bar] on/40 PSI [2.8 bar]
- Self-priming up to 2.5 vertical feet [.76 m]
- Long-life pressure switch
- Thermally-protected ball bearing motor with splash-proof housing
- Internal fan radiates heat; external heat sink not required
- Integral on/off switch optional

The SHURflo SLV is ideal for low volume, intermittent-duty applications requiring a compact pump with low power consumption. Unique design has no metals in the fluid path for maximum chemical resistance. Pump features include automatic demand operation and elastomers that handle a wide variety of chemicals. Perfect for low volume spraying and transfer. Cost effective yet with high performance and reliability; the SLV offers tremendous value.

### Order Information - Automatic Demand Pumps 12 VDC

| Part #      | Description   | Max GPM | Max PSI | Port Size | Max Draw |
|-------------|---|---------|---------|-----------|----------|
| SLV10-AA40  | Viton® valves, Santoprene® diaphragm, 40 PSI demand switch, Integral on/off switch included         | 1       | 30      | 3/8" Barb | 2.5      |
| SLV10-AA41  | Viton® valves, Santoprene® diaphragm, 40 PSI demand switch  | 1       | 30      | 3/8" Barb | 2.5      |
| SLV10-AA48* | Viton® valves, Santoprene® diaphragm, 40 PSI demand switch, Manual switch and 2 pin connector 12VDC | 1       | 30      | 3/8" Barb | 2.5      |

\* Packaged in quantities of 6, for single pack, add suffix "AB" (i.e.: SLV10-AA48-AB).

### Automatic Demand Pumps 12 VDC

| Model      | PSI | BAR | GPM  | L/min | Amps |
|------------|-----|-----|------|-------|------|
| SLV10-AA40 | 3   | 0.2 | 0.90 | 3.4   | 1.8  |
|            | 10  | 0.7 | 0.73 | 2.8   | 2.1  |
|            | 20  | 1.4 | 0.62 | 2.3   | 2.3  |
|            | 30  | 2.1 | 0.49 | 1.9   | 2.5  |
| SLV10-AA41 | 3   | 0.2 | 0.90 | 3.4   | 1.8  |
|            | 10  | 0.7 | 0.73 | 2.8   | 2.1  |
|            | 20  | 1.4 | 0.62 | 2.3   | 2.3  |
|            | 30  | 2.1 | 0.49 | 1.9   | 2.5  |
| SLV10-AA48 | 3   | 0.2 | 0.90 | 3.4   | 1.8  |
|            | 10  | 0.7 | 0.73 | 2.8   | 2.1  |
|            | 20  | 1.4 | 0.62 | 2.3   | 2.3  |
|            | 30  | 2.1 | 0.49 | 1.9   | 2.5  |

### Order Information - Automatic Demand Pump 24 VDC

| Part #     | Description  | Max GPM | Max PSI | Port Size | Max Draw |
|------------|--|---------|---------|-----------|----------|
| SLV10-AB41 | Viton® valves, Santoprene® diaphragm, 40 PSI demand switch | 1       | 30      | 3/8" Barb | 1.23     |

### Automatic Demand Pump 24 VDC

| Model      | PSI | BAR | GPM  | L/min | Amps |
|------------|-----|-----|------|-------|------|
| SLV10-AB41 | 3   | 0.2 | 0.90 | 3.4   | 0.89 |
|            | 10  | 0.7 | 0.73 | 2.8   | 1.00 |
|            | 20  | 1.4 | 0.62 | 2.3   | 1.15 |
|            | 30  | 2.1 | 0.49 | 1.9   | 1.23 |

### Order Information - No Control Transfer Pump 12 VDC

| Part #     | Description   | Max GPM | Max PSI | Port Size | Max Draw |
|------------|---|---------|---------|-----------|----------|
| SLV10-HA01 | Viton® valves, Geolast® diaphragm, No demand switch | 1       | 30      | 3/8" Barb | 2.5      |

### No Control Transfer Pump 12 VDC

| Model      | PSI | BAR | GPM  | L/min | Amps |
|------------|-----|-----|------|-------|------|
| SLV10-HA01 | 3   | 0.2 | 0.90 | 3.4   | 1.8  |
|            | 10  | 0.7 | 0.73 | 2.8   | 2.1  |
|            | 20  | 1.4 | 0.62 | 2.3   | 2.3  |
|            | 30  | 2.1 | 0.49 | 1.9   | 2.5  |

## Drill Pump



- Self-priming to 8 feet [2.4m] vertical
- Pumps liquids 40° F to 120° F [4.4° C to 48.8° C]
- BUNA impeller and seals
- 1/4" [6.35 mm] shaft fits standard drills

Attaches to any standard 1/4" [6.35 mm] drill motor. Ideal for pumping water from appliances, aquariums, water beds, sinks, toilets or drums. Includes a 1/4" [6.35 mm] oil probe that easily allows the transfer of oil from cars, trucks, lawn and garden equipment. Not intended for use with flammable liquids or in flammable environments.

### Order Information

| Part #   | Max GPH | Port Size    | Shaft Size | L/hr |
|----------|---------|--------------|------------|------|
| 3010-000 | 200     | 3/4" (M) GHT | 1/4"       | 757  |

## Oil Change System



- Complete with necessary tubing and oil storage container
- Built-in reversible switch and 8 foot cable with battery clips
- Thermal overload protection

Makes a messy job clean and easy. Simply install the oil probe in the engine oil dipstick tube, attach the battery clips, and flip the switch. Oil is safely removed and stored in the easy to carry container. Oil should be heated to 140°F for maximum pump efficiency.

### Order Information

| Model        | Description       |
|--------------|-------------------|
| 8050-305-426 | Oil Change System |

## Accumulator Tank, Heat Sink



Accumulator Tank

Heat Sink

### Order Information

| Model   | Description  |
|---------|--|
| 181-101 | Accumulator Tank: 24 oz. total capacity (liquid and air), pre-pressurized to 20 PSI [1.4 bar], (0 to 100 PSI [6.9 bar] range of adjustment), Santoprene® bladder, mounting bracket. 1/2" (F) NPT Female ports, NSF approved. |
| 34-007  | 5" [12.7 cm] Heat Sink to assist cooling in Continuous-duty applications   |
| 34-006  | 3" [7.6 cm] Heat Sink to assist cooling in Continuous-duty applications  |

## SHURflo™ Bowl Style Strainers



### Order Information

| Model   | Description   |
|---------|---|
| 255-223 | 50 Mesh screen, 1/2" Barb Inlet x 1/2" NPSM Female Outlet                     |
| 255-313 | 50 Mesh screen, 1/2" NPSM Male Inlet x 1/2" NPSM Female Outlet, EPDM O-ring   |
| 255-323 | 50 Mesh screen, 1/2" Barb Inlet x 1/2" NPSM Female Outlet, EPDM O-ring        |
| 255-646 | 50 Mesh screen, 3/8" x 3/8" MNPT Poly/Nylon, Viton® O-ring                    |
| 255-457 | 50 Mesh screen, 3/8" x 3/8" MNPT Poly/Nylon, Buna O-ring                      |
| 255-568 | 50 Mesh screen, 3/8" x 3/8" MNPT Poly/Nylon, EPDM O-ring                      |
| 255-613 | 50 Mesh screen, 1/2" NPSM Male Inlet x 1/2" NPSM Female Outlet, Viton® O-ring |
| 255-623 | 50 Mesh screen, 1/2" Barb Inlet x 1/2" NPSM Female Outlet, Viton® O-ring      |
| 255-413 | 50 Mesh screen, 1/2" NPSM Male Inlet x 1/2" NPSM Female Outlet, Buna O-ring   |
| 255-423 | 50 Mesh screen, 1/2" Barb Inlet x 1/2" NPSM Female Outlet, Buna O-ring        |

## Barb Tee



| Part #   | Description                    |
|----------|--------------------------------|
| 8-126-00 | 1/2" [12mm] Barb Tee - Polypro |

## Barb Tee X Pipe



| Part # | Description                                   |
|--------|---|
| 8-010  | 3/8" [10mm] MNPT-Male x 1/2" Barb Tee - Nylon |

## Swivel Hex Wingnut Straight



| Part #   | Description  |
|----------|--|
| 234-2936 | 1/2" [12mm] NPT-Female x 5/8" [16 mm] Barb - Polypro |
| 234-2946 | 1/2" [12mm] NPT-Female x 3/4" [19 mm] Barb - Polypro |
| 234-2926 | 1/2" [12mm] NPT-Female x 1/2" [12 mm] Barb - Polypro |
| 234-2916 | 1/2" [12mm] NPT-Female x 3/8" [10 mm] Barb - Polypro |

## Swivel Hexnut Elbow



| Part #   | Description  |
|----------|--|
| 234-3926 | 1/2" [12mm] NPT-Female x 1/2" [12 mm] Barb Swivel Hexnut Elbow - Polypro |
| 234-3916 | 1/2" [12mm] NPT-Female x 3/8" [10 mm] Barb Swivel Hexnut Elbow - Polypro |
| 234-3946 | 1/2" [12mm] NPT-Female x 3/4" [19 mm] Barb Swivel - Polypro              |
| 234-3936 | 1/2" [12mm] NPT-Female x 5/8" [16 mm] Barb Swivel - Polypro              |

## Barbed X Pipe Straight



| Part #   | Description  |
|----------|--|
| 8-005-01 | 3/8" [10mm] NPT-Male x 3/8" [10 mm] Barb - Polypro |
| 8-007-01 | 3/8" [10mm] NPT-Male x 1/2" [12 mm] Barb - Polypro |
| 8-021-01 | 1/2" [12mm] NPT-Male x 1/2" [12 mm] Barb - Polypro |

## Barbed X Pipe Elbow



| Part #   | Description                              |
|----------|--|
| 8-006-01 | 3/8" [10mm] NPT-Male x 3/8" [10 mm] Barb |
| 8-008-01 | 3/8" [10mm] NPT-Male x 1/2" [12 mm] Barb |

## Adapters



8-145-00



8-150-01



8-205-00

| Part #    | Description  |
|-----------|--|
| 8-145-00  | 3/8" [10mm] NPT-Male x 1/2" [12 mm] NPT-Male - Polypro |
| 8-150-01* | 1/2" [12mm] NPT-Female x 3/4" [19 mm] GHT (M) - Nylon  |
| 8-205-00  | 1/2" [12mm] NPT-Female x 1/2" [12 mm] NPT-Male - Acryl |

\*Fitting available only in nylon – CHECK COMPATIBILITY.



The SHURflo AG Runner™ Transfer Pump System is designed to safely and accurately transfer bulk chemicals to the point of use.

Features include:

- Industry leading pump
- Portable
- Can be used with a variety of bulk containers
- Built for rugged service with a heavy-duty welded frame
- Simple and accurate flow indicator

### Order Information

| Part#           | Flow Meter Type        | Description   |
|-----------------|------------------------|---|
| SF-1100-PTS     | Pump-mounted (FM-1100) | Chemical Transfer Pump with 12 VDC motor, 20 ft. cable, alligator clips and in-line fuse (Part # SF-1100), electronic flow meter, 1-in. NPT x 12 ft. EPDM discharge hose with ball valve/spout, and 1-in. NPT x 12 ft. EPDM inlet hose with 1-in. elbow/ball valve/fitting assembly with locking cam arms |
| SF-1100-PTSi    | Inline (FM-1100i)      |   |
| SF-1100-PTSi-00 | No Flow Meter          |   |
| SF-1105-PTS     | Pump-mounted (FM-1100) |   |
| SF-1105-PTSi    | Inline (FM-1100i)      |   |

See Mini-Bulk Pump (pg. 106) for performance information.



## Mini-Bulk Chemical Transfer System



SHURflo Mini-Bulk Chemical Transfer Pumps and Systems are designed specifically for chemical company tanks where the pump is integral to the tank. The SF-1100-REC system is mounted to any tank with a 9-inch, threaded opening. This system allows the pump to recirculate the suspended chemical components prior to transferring to the point of use.

### Order Information

| Part#           | Description  |
|-----------------|--|
| SF-1100-REC-DT* | Chemical Transfer Pump with 12 VDC motor, 20 ft. cable, alligator clips & in-line fuse (Part # SF-1100), in-line electronic flow meter (Part # FM-1100i), 1-in. NPT x 12 ft. EPDM discharge hose with ball valve/spout, 3-way valve, tubing and fittings to allow tank recirculation |
| SF-1105-REC-DT* |  |

See Mini-Bulk Pump (pg. 106) for performance information.

\* DT model includes 28" dip tube.





The SF-1100 Series Bulk Chemical Pumps are the industry leader. They are designed for efficiency and power to handle highly viscous fluids. Servicing the SF-1100 series pump is a rare event, but if needed, it can be serviced quickly and easily with only a few hand tools.

- Specialized EPDM elastics or Viton® option
- 12 volt DC or 110 volt AC motor option
- 20 foot cord with alligator clips and in-line fuse (DC only)
- Weather protected on/off switch
- Internal bypass to protect the pump at shut-off
- 2" MNPT inlet, 1" FNPT outlet
- Capable of priming up to 12 feet

## Order Information

| Part#        | Valves | Motor   |
|--------------|--------|---------|
| SF-1100      | EPDM   | 12 VDC  |
| SF-1100-110V | EPDM   | 110 VAC |
| SF-1105      | Viton® | 12 VDC  |

| Model               | PSI | BAR | GPM  | L/min | Amps |
|---------------------|-----|-----|------|-------|------|
| SF-1100 and SF-1105 | 0   | 0.0 | 10.7 | 40    | 9.3  |
|                     | 5   | 0.3 | 10.1 | 38    | 10.3 |
|                     | 10  | 0.7 | 8.7  | 33    | 12.3 |
|                     | 15  | 1.0 | 7.6  | 29    | 13.9 |

# Mini-Bulk Flow Meters



The FM-1100 Series Electronic Flow Meter is designed for accurate and easy measuring of transferred chemicals. The FM-1100 Series Flow Meter is an integral component for a complete bulk chemical transfer system.

- Accurate nutating disk design
- Large LCD display makes meter reading easy from a distance
- Simple calibration steps and control button layout
- Long-life lithium battery
- Easy-to-service electronics and batteries
- Available in pump-mounted and hose-end configurations

## Order Information

| Part#    | Description                                    |
|----------|--|
| FM-1100  | Pump-mounted meter kit- 1" MNPT inlet & outlet |
| FM-1100i | Inline meter kit -1" FNPT inlet & outlet       |

# Mini-Bulk Pumps & Flow Meter Kits



## Motor Assembly Kit (Part# 94-718-00)



The 94-718-00 is the motor assembly used in any SF-1100 Series Pump.

The motor assembly kit includes:

- 12 VDC motor with 20 ft. cable, alligator clips & inline fuse
- Integrated pump lower housing
- Built-in on-off Switch

## Backflow Prevention Check Valve (Part# 3320-0064)



Anti-flow back valve for EPA compliance

## 3 PSI Check Valve (Part# 3320-0065)



## FM-1100 Series Meter Electronics Kit (Part# 94-732-00)



The 94-732-00 Flow Meter Electronics kit includes the front cover assembly and the electronic display including o-ring and batteries. The electronics kit will fit both the pump-mounted and inline meters.

## FM-1100 Series Meter Nutating Chamber Assembly Kit (Part# 94-734-00)



The 94-734-00 is a replacement nutating chamber assembly which includes the o-ring seal. The nutating chamber assembly kit will fit both the pump-mounted and inline meters.

## Valve Housing Kits (Part# 94-720-00)



The replacement valve housings include a complete, fully-assembled valve housing with o-ring seal ready for installation. Available with EPDM or Viton® valves.

| Part#     | Description   |
|-----------|---------------|
| 94-720-00 | EPDM valves   |
| 94-720-05 | Viton® valves |

**Manufacturer recommends replacing the O-ring Seal whenever the pump has been taken apart.**

## Diaphragm/Lower Housing/Drive Assembly Kit (Part# 94-719-00)



The 94-719-00 is a replacement Santoprene® diaphragm/lower housing/drive assembly ready for installation.

## Pump Housing Kit (Part# 94-721-00)



The 94-721-00 is a replacement Polypropylene Upper Housing which includes the O-ring Seal and Pump Head Screws.

**Manufacturer recommends replacing the O-ring Seal whenever the pump has been taken apart.**

## FM-1100 Series Meter Housing Seal Cover Kit (Part# 94-733-00)



The 94-733-00 Flow Meter Housing Seal Cover kit includes the seal cover, o-ring and screws. The flow meter housing seal cover will fit both the pump-mounted and inline meters.

## FM-1100 Series Meter Housing Kits



Replacement meter housings for pump-mounted or inline flow meters.

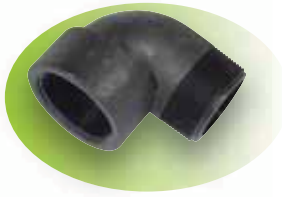
| Part#     | Description                                       |
|-----------|---|
| 94-735-00 | Replacement 90° meter housing with O-ring seal    |
| 94-736-00 | Replacement inline meter housing with O-ring seal |

## Polypropylene Reducer Coupling (Part# 3320-0064)



2 inch FNPT by 1 inch FNPT polypropylene reducer coupling

## 90° Elbow Fitting Kit (Part# 94-712-00)



The 94-712-00 is a replacement 2-in. street elbow. Fitting has 2-in. male NPT threads on one side and 2-in. female NPT threads on the other.

## Ball Valve/Spout Kit (Part# 94-716-00)



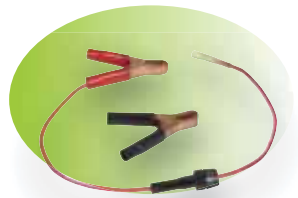
The 94-716-00 is a replacement 1-in. NPT ball valve with spout.

## Discharge Hose Kit (Part# 94-717-00)



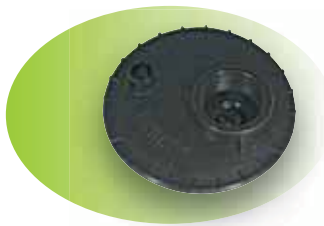
The 94-717-00 is a replacement 1-in. NPT x 12 ft. EPDM hose.

## Alligator Clips/Fuse Kit (Part# 94-723-00)



The 94-723-00 is a replacement set of red and black alligator clips, including a fuse holder.

## Recirculation Lid Kit (Part# 94-724-00)



The 94-724-00 is a replacement lid for the Mini-Bulk Chemical Recirculation system.

## Recirculation Cap Kit (Part# 94-725-00)



The 94-725-00 is a replacement cap for the Mini-Bulk Chemical Recirculation system.

## Recirculation System Return Hose Kit (Part# 94-737-00)



The Recirculation System Return Hose Kit includes the return hose and two hose clamps.

## Elbow/Valve/Coupling Kit (Part# 94-738-00)



The 94-738-00 is a replacement elbow/valve/coupling assembly, which includes a 1-in. street elbow, 1-in. ball valve and a 1-in. bayonet tank coupling.