

Easy Load Pump Head

YZ35-PPS, YZ35(Aluminum Alloy)



Model Number

| YZ35-PPS, YZ35(Aluminum Alloy)



Product Introduction

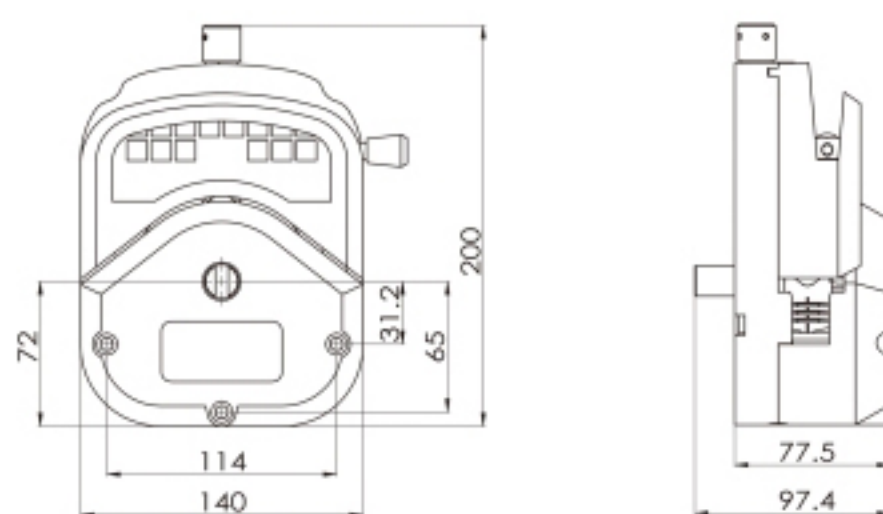
YZ35 pump head with aluminum alloy or PPS housing material. 304 stainless steel rollers assembly achieve high precision transferring liquid. Adaptive tubing cartridge structure makes it more easy to load the tubing.

YZ35 Pump Head Tubing Holder Advantages

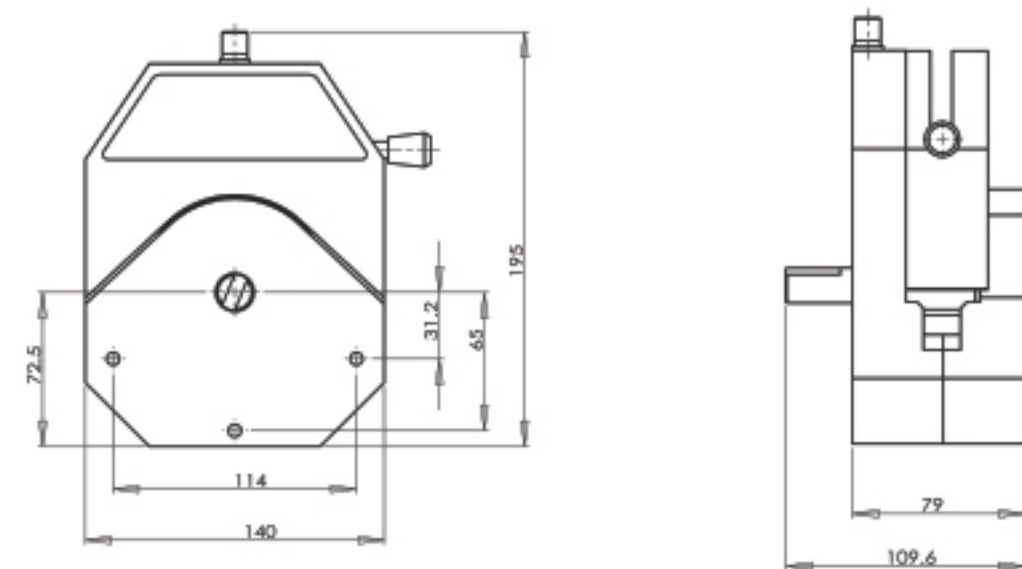
- 01/ Fix the tubing; lower the tubing shaking during working; **improve the stability and accuracy of flow rate.**
- 02/ Prevent the tubing wear, **extend the tubing lifetime.**



Dimension Drawing (Unit: mm)



YZ35-PPS



YZ35-Aluminum Alloy

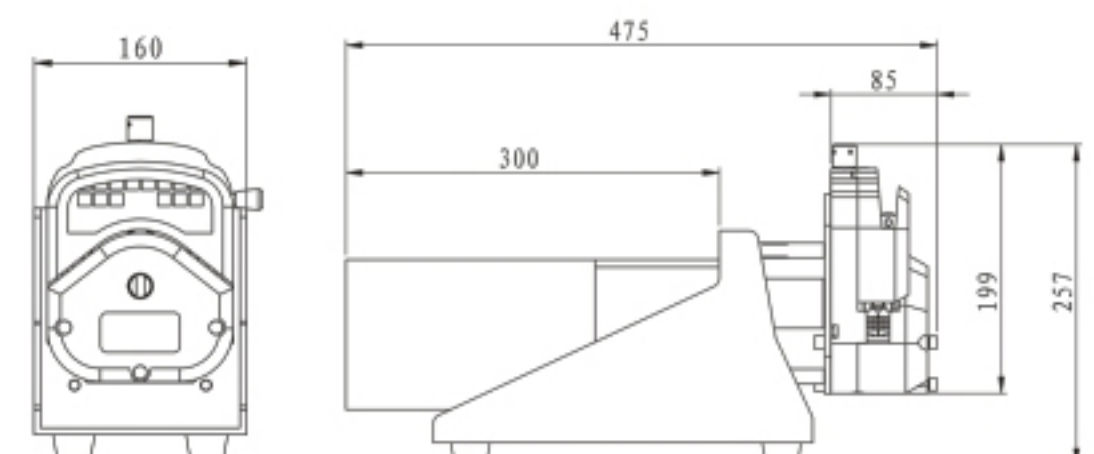
OEM-J24 Series/YZ35



Product Introduction

OEM-J24 use AC gear motor drive, YZ35 pump head is very easy to install tubing. Suitable for laboratory sampling, filling, ultrafiltration, big flow rate pumping and cement additives. It can be used separately, also can combine with other equipment.

Dimension Drawing (Unit: mm)



Technical Specifications

Pump Head	Tubing	ID×Wall Thickness(mm)	mL / r	Flow Rate(mL/min) (0-600rpm)	Power Supply	Motor Type	Material/Weight(kg)	
							Aluminum Alloy	PPS
YZ35	26"	6.4×3.3	6.9	<4200	Three phase 220V/380V for option	AC motor with fixed speed or adjustable speed	4.36	1.50
	73"	9.6×3.3	12.3	<7400				
	82"	12.7×3.3	20	<12000				

