

PZ I



TECHNICAL DATA

Fluid connections	1/4" BSPP - Ø 12 mm
Air connection	1/4" BSPP - Ø 8 mm
Max. flow rate	8 lt/min
Max air pressure	7 bar
Max delivery head	70 m
Max suction lift dry	3 m
Max suction lift wet	9,8 m
Max solid passing	2 mm
Noise level	65 dB
Max viscosity	5.000 cps
Displacement per stroke	24 CC ~

Displacement per stroke may vary based on suction condition, discharge head, air pressure and fluid type.

- II 3/3 G Ex h IIC T4 Gc
- II 3 D Ex h IIIB T135°C Dc X

POLYPROPYLENE

WEIGHT

TEMPERATURE

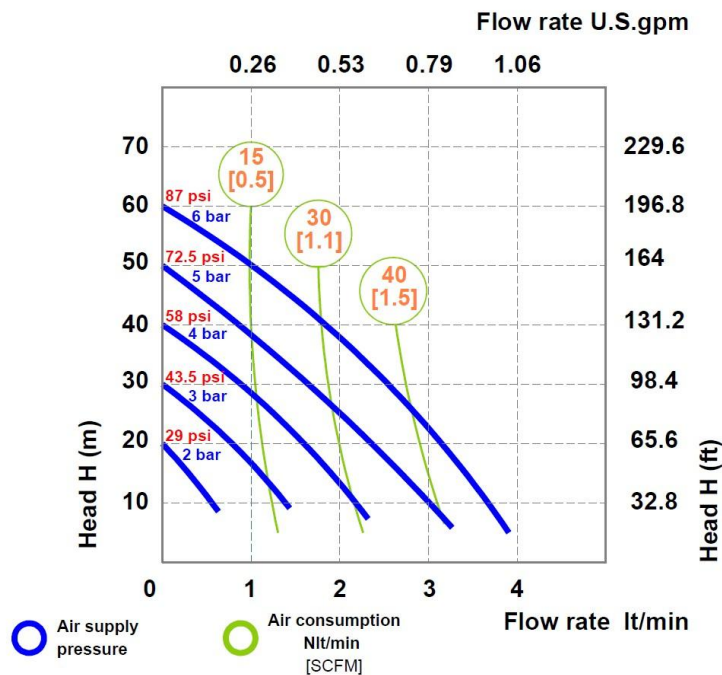
-5°C

+65°C



PERFORMANCE

The curves and performance values refer to pumps with submerged suction and free delivery outlet, with water at 20 °C. These data may vary according to the construction materials and hydraulic conditions.



FLUIMAC S.r.l. - Via Breascia, 1 - 21049 - Tradate - VA - ITALY
info@fluimac.com - www.fluimac.com
 tel. +39 0331 866688 - Fax +39 0331 864870
 P.I./VAT 03259160129





COMPOSITION

MODEL	CASING	DIAPHRAGM	BALLS	SEATS	GASKET	CONNECTIONS	ATEX	PORTS
PZ001	P = PP	NN = NBR+NBR TT = PTFE+PTFE	T=PTFE S=SS	P = PP S = SS	D = EPDM V = VITON N = NBR T = PTFE	1 = BSPP / PUSH- IN FITTING	- = ZONE 2	TS = STANDAR D



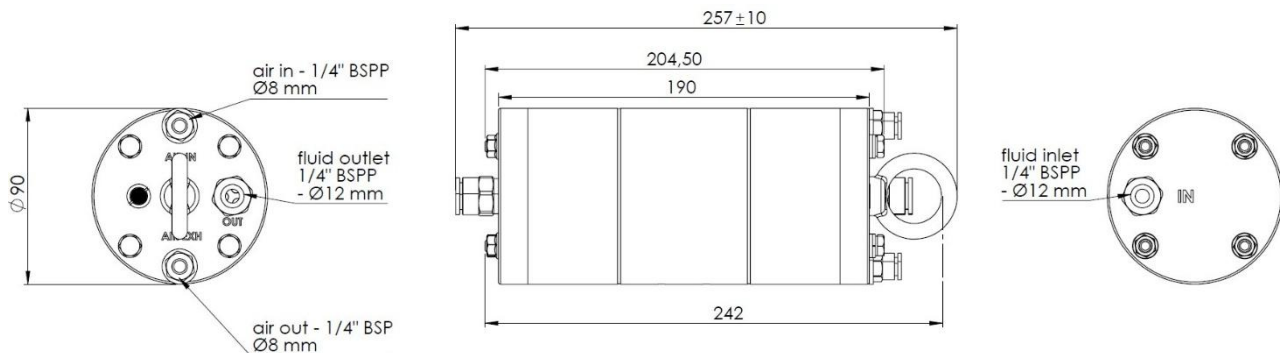
AVAILABLE CONNECTIONS

DELIVERY:

SUCTION:

PACKING DIMENSION
CARTON BOX: // x // x // cm

DIMENSIONS



Technical data are approximate and not binding for the manufacturer who reserves the right to change them without notice at any time.