



# Kompact

Solenoid driven dosing pumps



Your Choice,  
Our Commitment

tel: +420 722 712 652

Create Flow

[info@createflow.cz](mailto:info@createflow.cz)  
[www.createflow.cz](http://www.createflow.cz)

# Simply Kompact dosing

Kompact is a simple and reliable range of micro-processor based wall mounted solenoid driven dosing pump.

The range has been designed to provide a general solution to the most commonly found daily needs. The range features both constant and proportional flow rates managed through a manually adjustable control dial on the front panel.

## PVDF-T pump head and ceramic ball valve as standard

Kompact, even in its basic variant, uses premium materials in its manufacture. The pump head comes as standard in PVDF-T, but can be optionally specified in natural PVDF and comes with a ceramic ball valve as standard improving the reliability of the pump over time and offers chemical compatibility of the wetted parts.

## Long life diaphragm tested to give "Five Year" working life

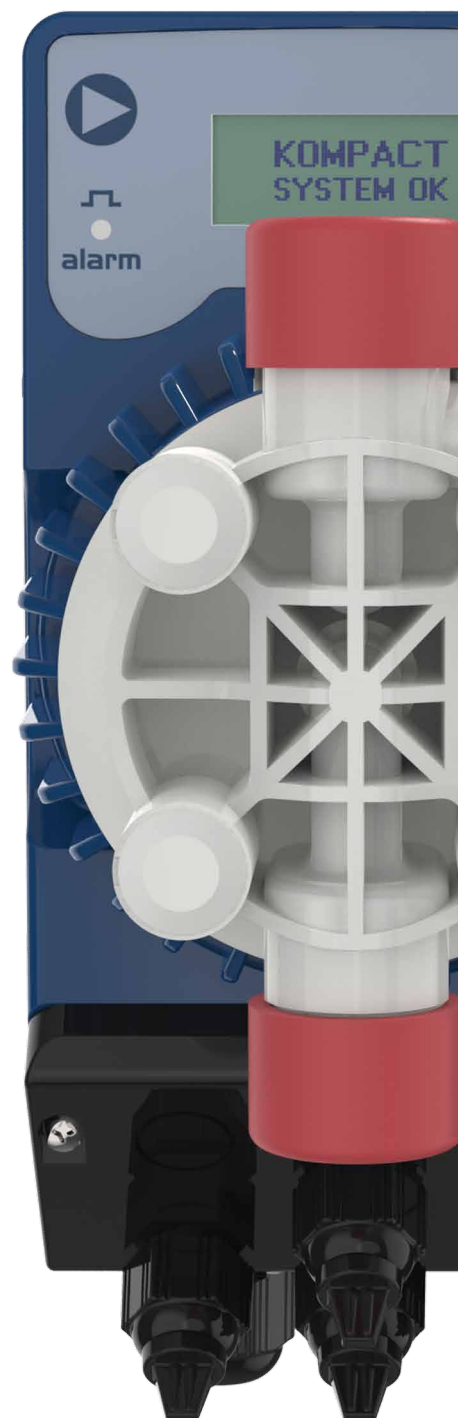
SEKO's diaphragms are made of pure solid PTFE offering a superior life expectancy guaranteed by SEKO for 5 years, making routine replacement no longer necessary.

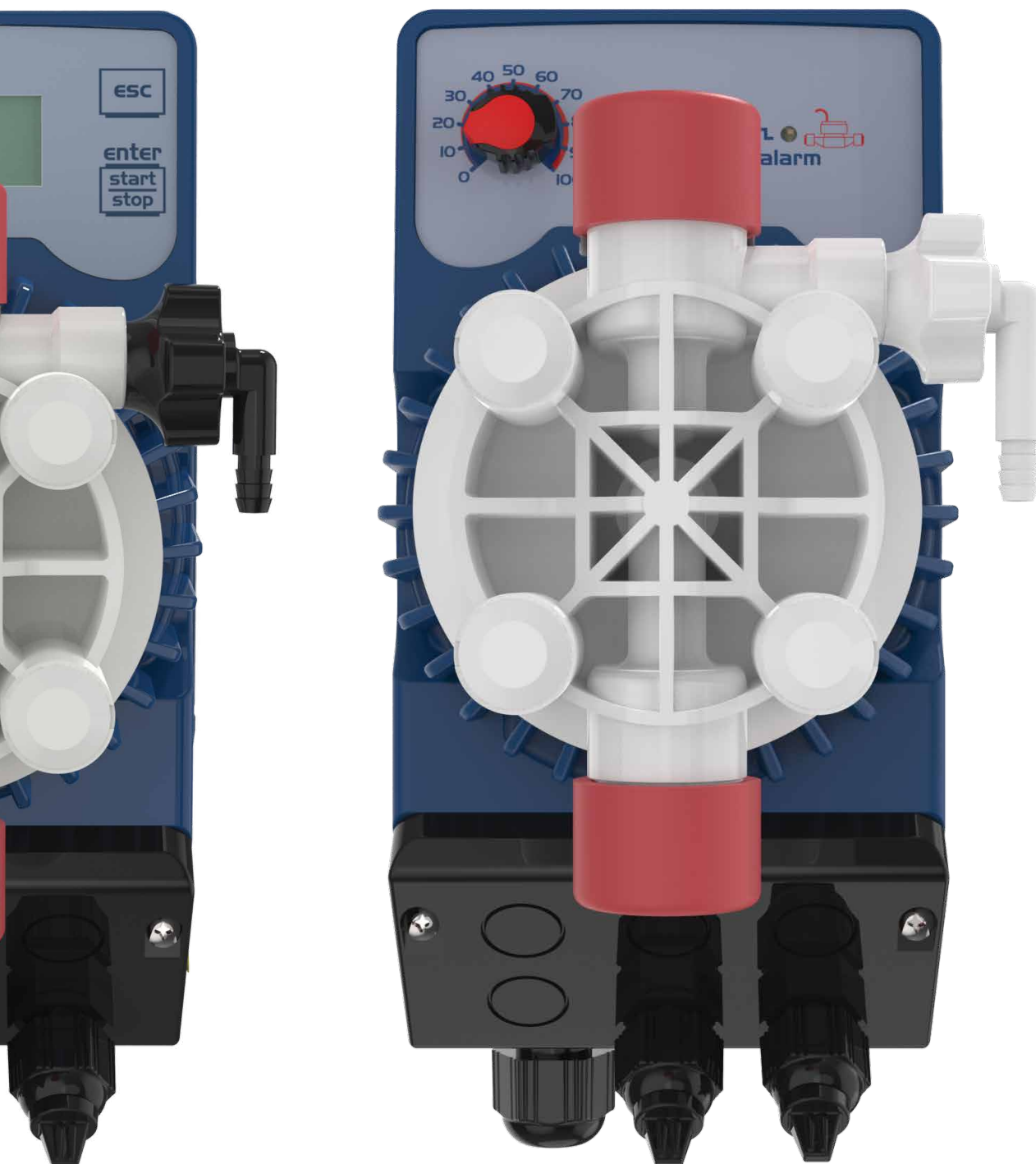
## Steady dosing performance

Some variants come with a Stabilized Multi Power Supply 100 - 240 Vac 50/60 Hz offering reduced energy consumption. The solenoid only draws the required power to activate the pump, based on the working conditions which brings improved pump efficiency as performance is not affected by power supply fluctuations.

## The range also features

Power-ON led indicator, multi colour LED status system, level control input, timed dosing with a weekly programmable timer, dosage in ppm, dosage batch, statistics, password protection for digital models and input ON-OFF (remote control)

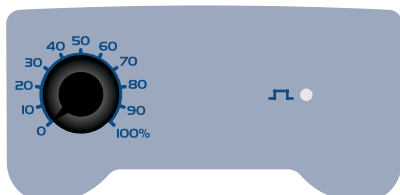




**200** Model  
with flow rate 5 l/h at 8 bar and 3 l/h at 10 bar

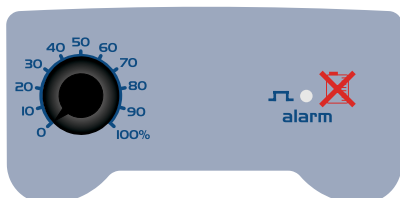
# Kompact

## Analogue and digital version



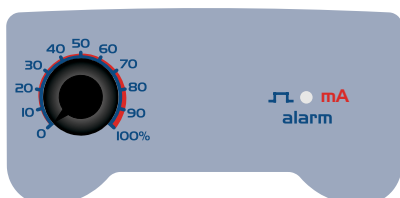
### Analogue dosing pump with constant dosage **Kompact AMS**

Constant flow rate manually adjustable by control dial on the front panel, Power-ON led indicator.



### Analogue dosing pump with constant dosage **Kompact AML**

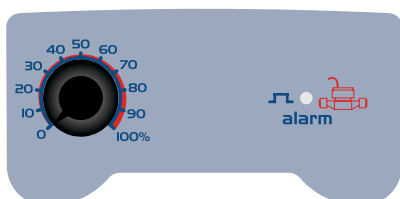
Constant flow rate manually adjustable by control dial on the front panel, Power-ON led indicator, level control input with two flow rate range.



### Analogue dosing pump with proportional dosage **Kompact AMM**

Constant flow rate manually adjustable, proportional flow rate according to an external analogue signal (4 – 20 mA), Power-ON led indicator and level control input.

- In Constant mode pump constantly doses the rate selected with the potentiometer.
- In Proportional mode pump doses proportionally to the analogue input signal (4 – 20 mA)



### Analogue dosing pump with proportional dosage **Kompact AMC**

Constant flow rate manually adjustable, proportional flow rate according to a digital input signal (from water meter), Power-ON led indicator and level control input.

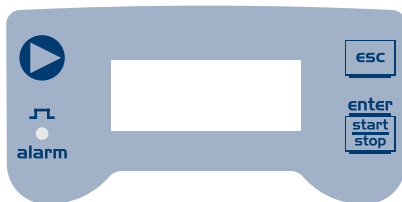
- In Constant mode pump constantly doses the rate selected with the potentiometer.
- In Proportional mode pump doses proportionally to the digital input signal with a max. input frequency 80Hz



### Digital dosing pump with proportional dosage **Kompact DPT**

Digital dosing pump with constant flow rate manually adjustable, with proportional flow rate according to an external analog (0/4÷20 mA or 20÷4/0 mA) or digital signal (water meter, hall sensor or voltage signal).

- Timed dosing with a weekly programmable timer
- Dosage in ppm
- Dosage batch
- Statistics
- Password
- Input ON-OFF (remote control)



### Digital dosing pump with proportional dosage **Kompact DRP**

Digital dosing pump with constant flow rate manually adjustable, with proportional flow rate according the measured pH or Redox value.

- PT100 probe input (thermal compensation)
- Input On-Off (remote control)

# Overview

## Accessories



### Threaded water meters TC1 - TH1 - TC0 Series

Single-jet water meters with pulse sender, dry dial and roller reading. Suitable for cold water up to 30°C.

- Size (4 or 1 pulse/l) from ½" (13 mm) to 2" (50 mm)
- Max flow (short period) from 3 to 30 m³/h
- Min flow (accuracy ±5%) from 30 to 450 l/h



### Flanged water meters FC Series

A high capacity helical vane (Woltmann) type water meter with dry dial reading and pulse sender. Suitable for cold water up to 50°C.

- Size from 2" (DN50) to 6" (DN 150)
- Max flow (short period) from 30 to 300 m³/h
- Min flow (accuracy ±5%) from 0,55 to 3 m³/h



### Mixers

Electric mixers, three-phases or single-phase, slow (200 rpm) or fast (1400 rpm) and flange attachment, for SER series tanks..

- Material : PVC - AISI 316
- Shaft length : 600 - 800 - 900 - 1100 mm
- Propeller diameter: Slow 150 - 220 mm / Fast 90 mm
- Motor : 0,12 kW



### Polyethylene tanks SER Series

Our tanks are designed to be integrated into dosing system assemblies using mixers and either motor driven or solenoid dosing pumps. All are made from food safe polyethylene and are resistant to most commonly found chemicals.

- Storage capacity (L) : 50 - 100 - 250-300 - 500 - 1000



### Reinforcement and Uncovered tanks

Tank reinforcement made of PVC (20 mm thick) to be used to install mixers and motor driven pumps or solenoid dosing pumps on SER series tanks .



### Suction Devices

A suction filter is provided to protect pump valves from debris or particles that could obstruct the pump valve. Suction devices can also be supplied with integral level controls. These allow the use of alarms, and protect against the system running dry.

- Easy installation; standard FPM seals (EPDM on request); made of PVC with transparent PVC suction; foot filter and non-return valve



### Flow Sensor

In order to assess the actual dosing phase, the flow sensor can be used to detect the pump's pulsations during the delivery phase. The sensor can also be used to determine the actual dosing flow rate. This flow sensor is fitted directly on the delivery valve on the dosing pump.

- Body PVC - PMMA - PVDF
- Seals FPM - EPDM
- Pressure max. 10 bar



### Priming-aid

Priming issues may occur with dosing pumps with low flow rates and extreme suction lifts compared to the pump capacity. This accessory can eliminate such problems.

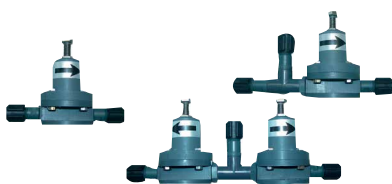
- Body PVC
- Seals FPM
- Connections IN/OUT 4/6 tube
- Model 300 ml



### Pump head with automatic degassing valve

Where gases are metered, this accessory allows resumption of correct dosing without any intervention from the user..

- Body PVDF - Seals FPM - Balls Ceramic
- Flow rate reduction max. 20%
- Connections 4/6 tube
- Should be used combined with 603 and 800 models



### Adjustables valves HY Series

- Body PVC
- Diaphragm FPM (standard) or EPDM (upon request)
- Flow rate max. 50 l/h Pressure max. 10 bar
- Connections 1/2"Gm, 4/6 and 8/12 tube



### Injection valves

- Body PVC
- Diaphragm FPM (standard) or EPDM (upon request)
- Flow rate max. 50 l/h Pressure max. 10 bar
- IN connections 1/2" Gm, 4/6 tube
- OUT connections 1/2" Gm



### Multifunction valve

- Body PVDF
- Diaphragm PTFE
- Seals FPM - EPDM
- Backpressure max 5 bar
- Overpressure max 18 bar
- Connections IN/OUT 4/6 tube



### Fixed / Adjustable backpressure valves

- Body PVDF
- Diaphragm / Seals FPM - EPDM
- Backpressure Fixed 1,5 bar Adjustable 0,5 ÷ 5 bar
- Connections IN 4/6 tube OUT 3/8"G - 1/2"G

# Your Choice, Our Commitment

In the modern Globalised world, being a privately owned Company has significant benefits especially for our Customers, our Partners. For over 40 years, SEKO has developed a Global organisation able to take the longer view, manage the pressure of the now, and to plan for the long term, delivering true Partnership for our Customers, with transparency and mutual respect for each other.

Whether it's for our renowned flexibility, our attention to detail, the high-quality products, or just the way we do business, we understand that it's Your Choice to do business with us. It is Our Commitment to fulfill your needs wherever you, our Customers are.



For more information about our portfolio, worldwide locations, approvals, certifications, and local representatives, please visit [www.seko.com](http://www.seko.com)

SEKO reserves the right to amend and change specifications without prior notice. All pictures shown are for illustration purpose only. Actual product may vary due to product enhancement. Published data may be subject to change.

© 2019 SEKO, Layout and origin: UK, 850001 KOMPAC V02

**tel: +420 722 712 652**

**Create Flow**

**[info@createflow.cz](mailto:info@createflow.cz)**  
**[www.createflow.cz](http://www.createflow.cz)**

