

### SPECIFICATIONS:

**MODEL NUMBER:** 8000-853-238

**PUMP DESIGN:** Positive Displacement 3 Chamber Diaphragm Pump

**CHECK VALVE:** (2-Way Op.) Prevents Reverse Flow & 6 Ft. Head Forward Flow

**CAM:** 3.0 Degree

**MOTOR:** Permanent Magnet, P/N 11-127-10

**VOLTAGE:** 24 VDC Nominal

**PRESSURE SWITCH:** Adjustable Shut-Off (Range 80-100 PSI)

Factory Set @100 PSI, Turn On 85 PSI  $\pm$ 5 PSI

**LIQUID TEMPERATURE:** 180 Degrees Fahrenheit (82 Degrees Centigrade) Max.

**PRIME:** Self-Priming Up To 8 Ft. Vertical,  
Max. Inlet Pressure 30 PSI (2.1 Bar)

**PORTS:** 3/8"-18 NPT Female

**MATERIAL OF CONSTRUCTION:**

**PLASTICS-** Nylon

**VALVES-** Viton

**DIAPHRAGM-** Santoprene

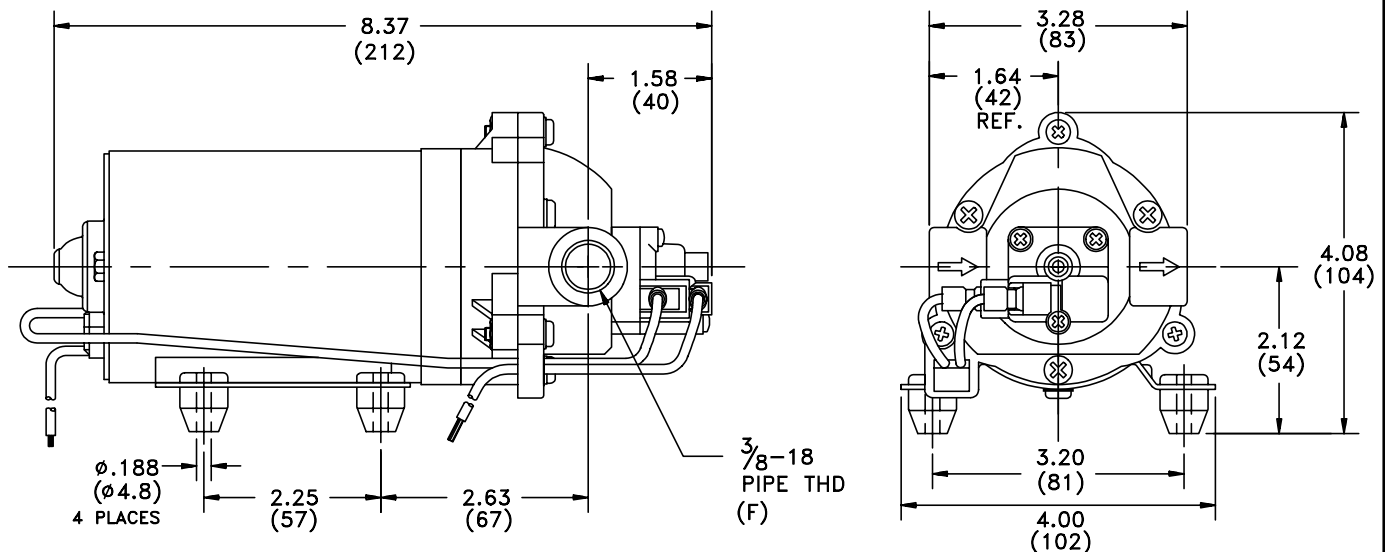
**FASTENERS-** Zinc Plated Steel

**NET WEIGHT:** 4.7 Lbs (2.13 Kg)

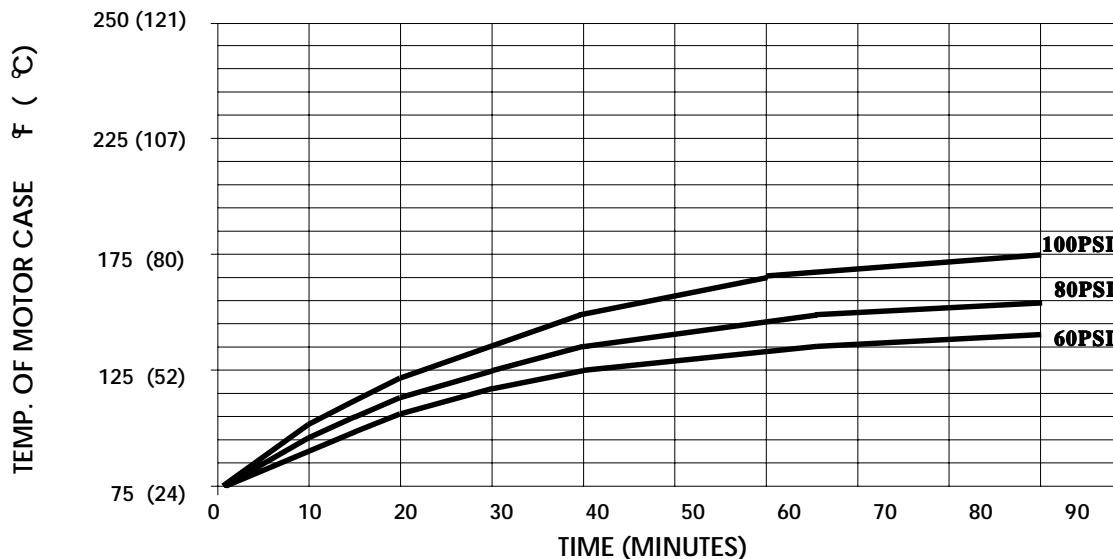
**DUTY CYCLE:** Intermittent (See Temperature Rise Chart)

**TYPICAL APPLICATIONS:** Soil Extraction

### DIMENSIONS:

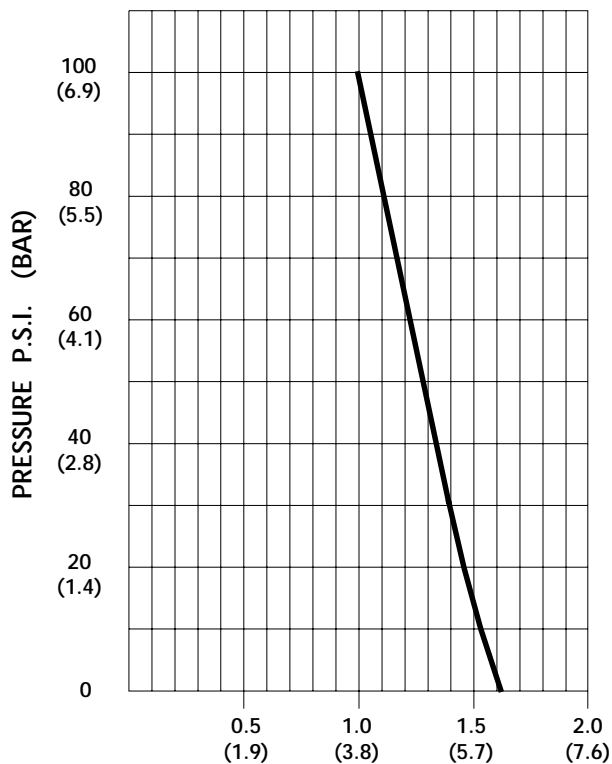


### TEMPERATURE RISE



THIS GRAPH IS FOR USE AS A DESIGN GUIDE. IT IS BASED ON RUNNING CONTINUOUSLY WITH AN AMBIENT TEMPERATURE OF 70° F IN STILL AIR.

### TYPICAL PERFORMANCE



| PRESSURE (PSI) | FLOW (GPM/LIT)  | RPM MIN/MAX      | CURRENT (AMPS) | VOLTAGE (VOLTS) |
|----------------|-----------------|------------------|----------------|-----------------|
| OPEN           | <b>1.61/6.1</b> | <b>2305/2320</b> | <b>1.8</b>     | <b>24VDC</b>    |
| 10             | <b>1.54/5.8</b> | <b>2280/2295</b> | <b>2.1</b>     | "               |
| 20             | <b>1.46/5.5</b> | <b>2240/2265</b> | <b>2.4</b>     | "               |
| 30             | <b>1.38/5.2</b> | <b>2200/2240</b> | <b>2.7</b>     | "               |
| 40             | <b>1.33/5.0</b> | <b>2145/2218</b> | <b>3.0</b>     | "               |
| 50             | <b>1.26/4.8</b> | <b>2115/2190</b> | <b>3.3</b>     | "               |
| 60             | <b>1.22/4.6</b> | <b>2090/2160</b> | <b>3.5</b>     | "               |
| 70             | <b>1.17/4.4</b> | <b>2065/2132</b> | <b>3.8</b>     | "               |
| 80             | <b>1.12/4.2</b> | <b>2030/2110</b> | <b>4.1</b>     | "               |
| 90             | <b>1.06/4.0</b> | <b>2000/2080</b> | <b>4.3</b>     | "               |
| 100            | <b>1.02/3.9</b> | <b>1970/2050</b> | <b>4.5</b>     | "               |

*-SPECIFICATIONS SUBJECT TO CHANGE WITHOUT NOTICE.*

*-ALL DATA BASED ON TESTING WITH WATER AT AMBIENT TEMPERATURE.*